

Colloquium – University of Kassel – December 14, 2018

# **Stagnation layers at the collision front between counter-streaming plasma plumes: formation, properties and potential applications**

## **John T. Costello**

National Centre for Plasma Science & Technology (NCPST)/  
School of Physical Sciences, Dublin City University

[www.physics.dcu.ie/~jtc](http://www.physics.dcu.ie/~jtc)



Physics Colloquium,  
Kassel Uni. 14-12-2017



# The collision front for **point and annular** colliding plasmas - a new target for XFEL probes ?

**John T. Costello**

National Centre for Plasma Science & Technology (NCPST)/  
School of Physical Sciences, Dublin City University

[www.physics.dcu.ie/~jtc](http://www.physics.dcu.ie/~jtc)



Physics Colloquium,  
Kassel Uni. 14-12-2017



# Outline of the Talk

1. Dublin and laser based 'X-rays'
2. Colliding Point Plasmas – Fundamentals
3. Colliding Annular Plasmas
4. Key properties – potential applications
5. Next Steps

# First X-ray Shadowgram - Ireland

## Brother Potamian CYReilly: Irish Scientist and X-ray Pioneer

“It is doubtful if any scientific discovery has excited such an immediate and widespread interest as **Roentgen's discovery of X-rays in November 1895**. Within days of his communication, “On a new form of Radiation” to the Wurzburg Medico- Physical Society on the 28th December, 1895, .....appropriate apparatus to generate and record x-rays, though primitive by today's standards, was already widely available in physics laboratories, even in schools such as De La Salle College in Waterford.

It is generally accepted that **the first recorded clinical x-ray photograph in Ireland, of a girl's hand, was produced by Professor Barratt and Mr. Jefcote at the Royal College of Science (now Government Buildings) on 16th March, 1896**, at the request of Richard Bolton McCausland, surgeon to Dr. Steevens' Hospital,.....”

1. Brother Potamian O'Reilly. “The Coming of Age of the X-Ray”. The Catholic World, 104, 78-82, New York, Oct. 1916.

J. P. MURRAY  
Department of Radiology  
University College, Galway



Figure 1: X-Ray taken by Brother Potamian in Waterford on 13<sup>th</sup> April, 1896, showing needle-like F.B. between heads of middle and ring finger metacarpals [1].

# Part 1. Laser based 'X-rays' in Dublin

1970s

72 OPTICS LETTERS / Vol. 2, No. 3 / March 1978

## New continua for absorption spectroscopy from 40 to 2000 Å

P. K. Carroll, E. T. Kennedy, and G. O'Sullivan

Physics Department, University College, Dublin, Ireland  
Received November 7, 1977

1980s

VOLUME 57, NUMBER 13

PHYSICAL REVIEW LETTERS

29 SEPTEMBER 1986

## Giant-Dipole-Resonance Absorption in Atomic Thorium by a Novel Two-Laser Technique

P. K. Carroll

Physics Department, University College Dublin, Dublin 4, Ireland

and

J. T. Costello

National Institute for Higher Education, Glasnevin, Dublin 9, Ireland  
(Received 18 June 1986)

1990s +  
NBS (NIST)

PHYSICAL REVIEW A

VOLUME 43, NUMBER 3

1 FEBRUARY 1991

## 3p photoabsorption of free and bound Cr, Cr<sup>+</sup>, Mn, and Mn<sup>+</sup>

J. T. Costello and E. T. Kennedy

Dublin City University, Glasnevin, Dublin 9, Ireland

B. F. Sonntag

II Institute für Experimentalphysik, Universität Hamburg, Hamburg, West Germany

C. W. Clark

National Institute of Standards and Technology, Gaithersburg, Maryland 20899  
(Received 16 July 1990)

# Paddy Goes to Hamburg.....

**Synchrotron – BW3....**

**1990s**

J. Phys. B: At. Mol. Opt. Phys. **28** (1995) L161–L168. Printed in the UK

## LETTER TO THE EDITOR

**High-resolution photoion yield measurements of ‘hollow’ atomic lithium**

L M Kiernan†, M-K Lee†, B F Sonntag†, P Sladeczek§, P Zimmermann§, E T Kennedy||, J-P Mosnier|| and J T Costello||

**2000s**

EU RTD Project: HRPI-CT-1999-50009

Title: “X-Ray FEL Pump Probe Facility”

Partners: DESY, DCU, Lund, MBI, Orsay & BESSY

1750 OPTICS LETTERS / Vol. 31, No. 11 / June 1, 2006

## Spectroscopic characterization of vacuum ultraviolet free electron laser pulses

S. Düsterer, P. Radcliffe, G. Geloni, U. Jastrow, M. Kuhlmann, E. Plönjes, K. Tiedtke, R. Treusch, and J. Feldhaus

Hamburger Synchrotronstrahlungslabor (HASYLAB) at Deutsches Elektronen-Synchrotron (DESY) Notkestrasse 85, D-22603 Hamburg, Germany

P. Nicolosi and L. Poletto

INFN-LUXOR, Department of Information Engineering, University of Padova, Via Gradenigo 6/A, 35131 Padova, Italy

P. Yeates, H. Luna, and J. T. Costello

National Center for Plasma Science and Technology and School of Physical Sciences, Dublin City University, Dublin, Ireland

P. Orr

International Research Centre for Experimental Physics, Queen’s University Belfast, BT7 1NN, UK

D. Cubaynes and M. Meyer

LIXAM/CNRS, Centre Universitaire Paris-Sud, Bâtiment 350, F-91405 Orsay Cedex, France

**2006 –**

**1<sup>st</sup> FEL paper  
from the DESY  
collaboration**



# Paddy Goes on Tour

**2012 - FLASH**  
**Cavalieri**

## ARTICLES

PUBLISHED ONLINE: 18 NOVEMBER 2012 | DOI: 10.1038/NPHOTON.2012.276

nature  
photonics

### Ultrafast X-ray pulse characterization at free-electron lasers

I. Grguraš<sup>1†</sup>, A. R. Maier<sup>2,3†</sup>, C. Behrens<sup>4†</sup>, T. Mazza<sup>5</sup>, T. J. Kelly<sup>6</sup>, P. Radcliffe<sup>5</sup>, S. Düsterer<sup>4</sup>, A. K. Kazansky<sup>7,8,9</sup>, N. M. Kabachnik<sup>5,9,10</sup>, Th. Tschentscher<sup>5</sup>, J. T. Costello<sup>6</sup>, M. Meyer<sup>5</sup>, M. C. Hoffmann<sup>1†</sup>, H. Schlarb<sup>4</sup> and A. L. Cavalieri<sup>1\*</sup>

nature  
photonics

## ARTICLES

PUBLISHED ONLINE: 24 NOVEMBER 2014 | DOI: 10.1038/NPHOTON.2014.278

**2014 - LCLS**  
**Kienberger**

### Measuring the temporal structure of few-femtosecond free-electron laser X-ray pulses directly in the time domain

W. Helm<sup>1,2†</sup>, A. R. Maier<sup>3,4†</sup>, W. Schweinberger<sup>2</sup>, I. Grguraš<sup>3,5</sup>, P. Radcliffe<sup>6</sup>, G. Doumy<sup>7,8</sup>, C. Roedig<sup>8</sup>, J. Gagnon<sup>2</sup>, M. Messerschmidt<sup>9</sup>, S. Schorb<sup>9</sup>, C. Bostedt<sup>9</sup>, F. Grüner<sup>3,4</sup>, L. F. DiMauro<sup>8</sup>, D. Cubaynes<sup>10</sup>, J. D. Bozek<sup>9</sup>, Th. Tschentscher<sup>6</sup>, J. T. Costello<sup>11</sup>, M. Meyer<sup>6,10</sup>, R. Coffee<sup>9</sup>, S. Düsterer<sup>12</sup>, A. L. Cavalieri<sup>3,5</sup> and R. Kienberger<sup>1,2\*</sup>

**2015 – FERMI**  
**Meyer**

Received 6 Dec 2014 | Accepted 2 Mar 2015 | Published 9 Apr 2015

DOI: 10.1038/ncomms7799

OPEN

### Sensitivity of nonlinear photoionization to resonance substructure in collective excitation

T. Mazza<sup>1,\*</sup>, A. Karamatskou<sup>2,3,\*</sup>, M. Ilchen<sup>1,4</sup>, S. Bakhtiarzadeh<sup>1,3</sup>, A.J. Rafipoor<sup>1,3</sup>, P. O’Keeffe<sup>5</sup>, T.J. Kelly<sup>6</sup>, N. Walsh<sup>6</sup>, J.T. Costello<sup>6</sup>, M. Meyer<sup>1</sup> & R. Santra<sup>2,3</sup>

# DCU Laser Plasma/Atomic Physics

*Laser Plasma @ NCPST - 6 laboratory areas focussed on pulsed laser matter interactions (spectroscopy/ imaging)*

## Research Domains:

1. Colliding Laser Produced Plasmas
2. Optical and Particle Diagnostics of Laser Produced Plasmas
3. Laser Induced Breakdown Spectroscopy (LIBS)
4. Pulsed Laser Deposition (PLD) of Materials
5. Ionization of Atoms and Ions with Ultra-Fast Laser (UFL), Laser Produced Plasma (LPP) and Free Electron Laser (XFEL) Sources

## Some Current Projects:

1. UV-Vis imaging, spectroscopy and interferometry of colliding laser produced plasmas [with and without laser reheating]
2. Double Pulse VUV-LIBS for Elemental Characterisation in Steel
3. Ion emission from single and colliding laser plasmas
4. PLD of ZnO nanostructures
5. 2 photon and 2 colour photoionization of atoms with X-FELs



# DCU Laser Plasma-AMO Physics Group

*Laser Plasma/AMO Physics @ NCPST - 6 laboratory areas focussed on pulsed laser matter interactions (spectroscopy/ imaging / particle detection)*

**Principal Investigators (5):** John T. Costello, Eugene T. Kennedy (Emeritus), Lampros Nikolopoulos (T), Jean-Paul Mosnier & Paddy Hayden (SFI SIRG PI)

**Current Research students (11):** Ben Delaney, Stephen Davitt, Hu Lu, Muhammed Alli, Sadaf Syedah, Lazaros Varvarezos, Tejaswi Katravulapally, Adam Prior & Columb Doherty

**Recent Int'l Interns (2012-17):** K Nishant/R Tejaswi, (LNMIIT, Jaipur), C Hand, (NUIM), S Reddy/R Namboodiri/A Neettiyath (IIT Madras), R Singh/S Gupta (IIT Kanpur), S Howard (Notre Dame), I-M Carrasco Garcia (Malaga), R. Black (Notre Dame), P Colley (Notre Dame)

**Recent PhD Grads (2009-2017):** Padraig Hough, Conor McLoughlin, Rick O'Haire, Dave Smith, Vincent Richardson, Tommy Walsh, Jack Connolly, Jiang Xi, Leanne Doughty, Eanna MacCarthy, Colm Fallon, Mossy Kelly, D Middleton, Cathal O'Broin, Brian Sheehy, Saikumar Inguva, Nichola Walsh, Getasew Wubetu & William Hanks

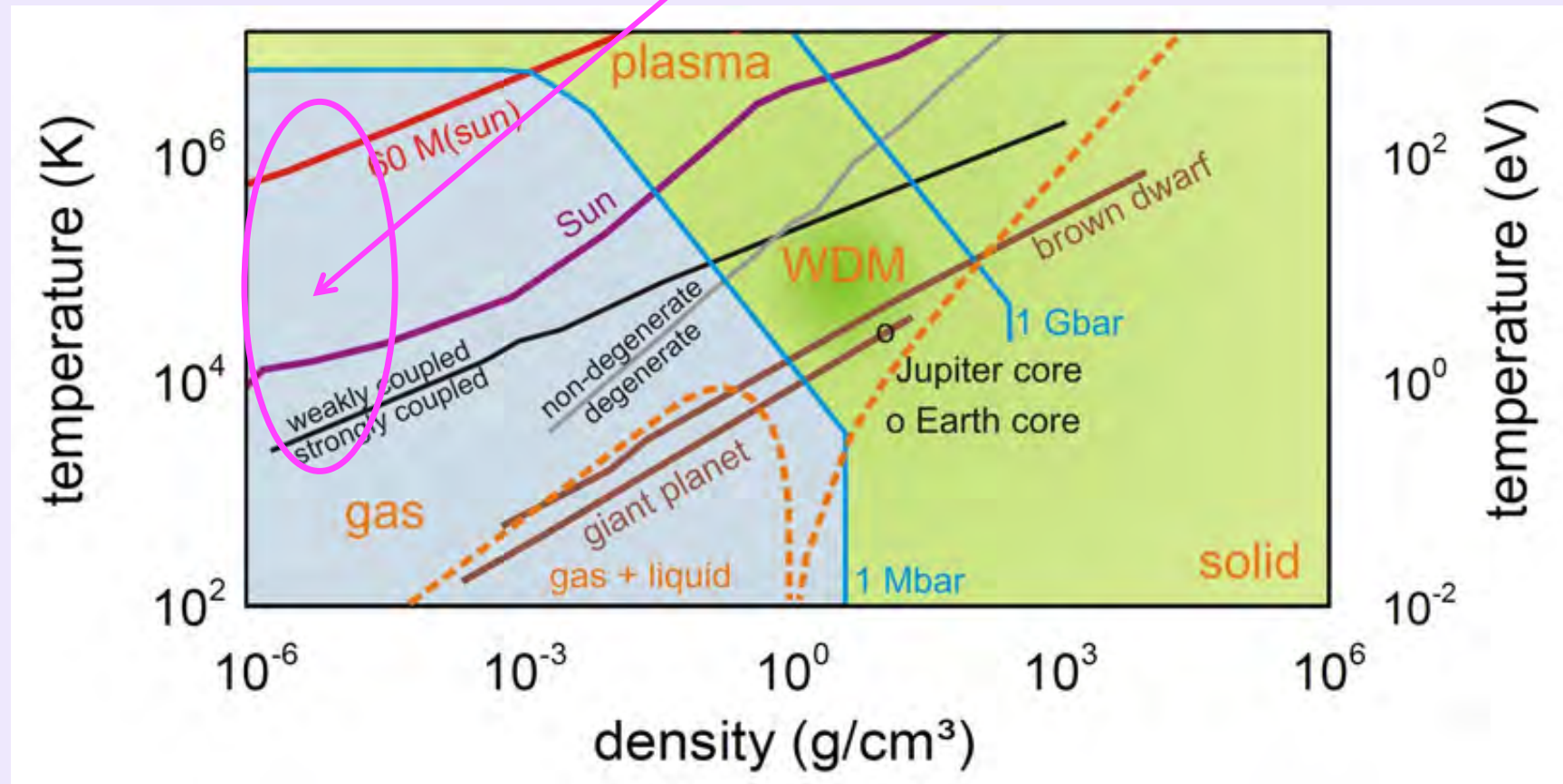
**Recent Past Postdocs (2011-2017):** Satheesh Krishnamurthy (Open Univ. UK), Pat Yeates (Elekta Oncology UK) & Subhash Singh (U. Rochester), Colm Fallon (Edenderry College), Mossy Kelly (Hull Univ.), Pramod Pandey (IIT Kanpur).



Physics Colloquium,  
Kassel Uni. 14-12-2017

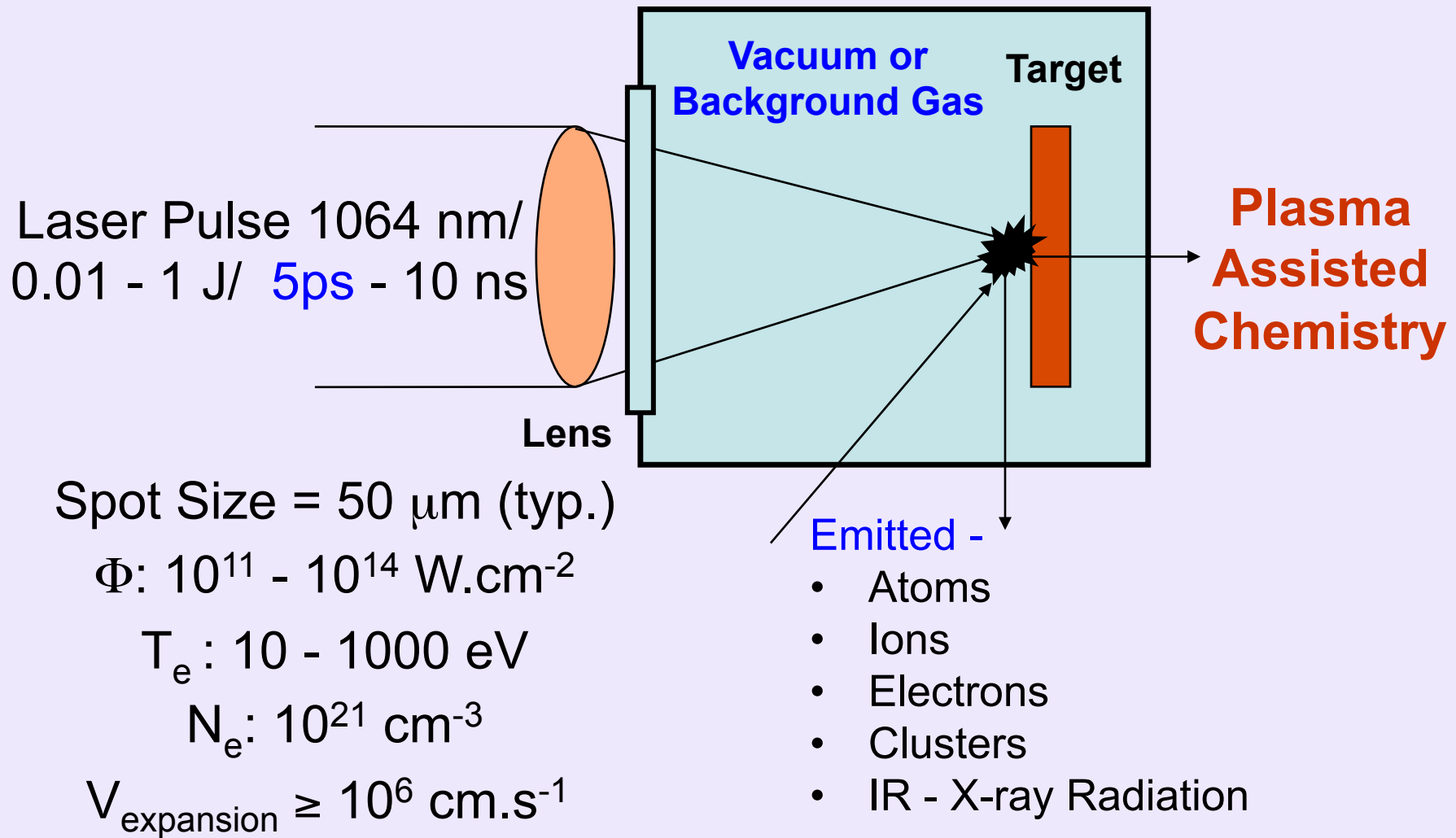


# Where table top plasmas reside....



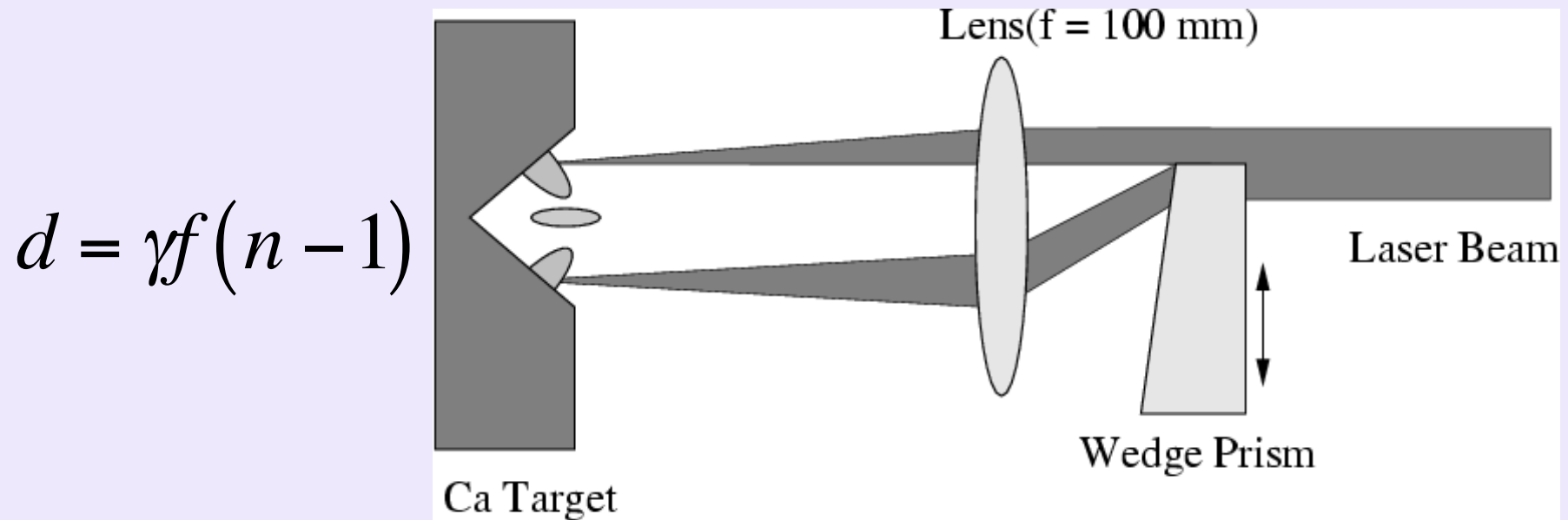
Source: XFEL HED Webpage...

## Part II – Table-Top Colliding Plasmas



# Part II – Table-Top Colliding Plasmas

## Typical Colliding Plasma Setup



**Laser Pulse Energy:**

50 - 500 mJ/ beam

**Laser Wavelengths:**

355nm, 532 nm, 1064 nm

**Laser Pulse duration:**

170 ps, 6 ns, 15 ns

**Focal Spot Size:**

~30 - 100  $\mu\text{m}$

**Irradiance:**

$10^9 - 10^{11} \text{ W.cm}^{-2}$

# Part II – Table-Top Colliding Plasmas

Not a new idea !

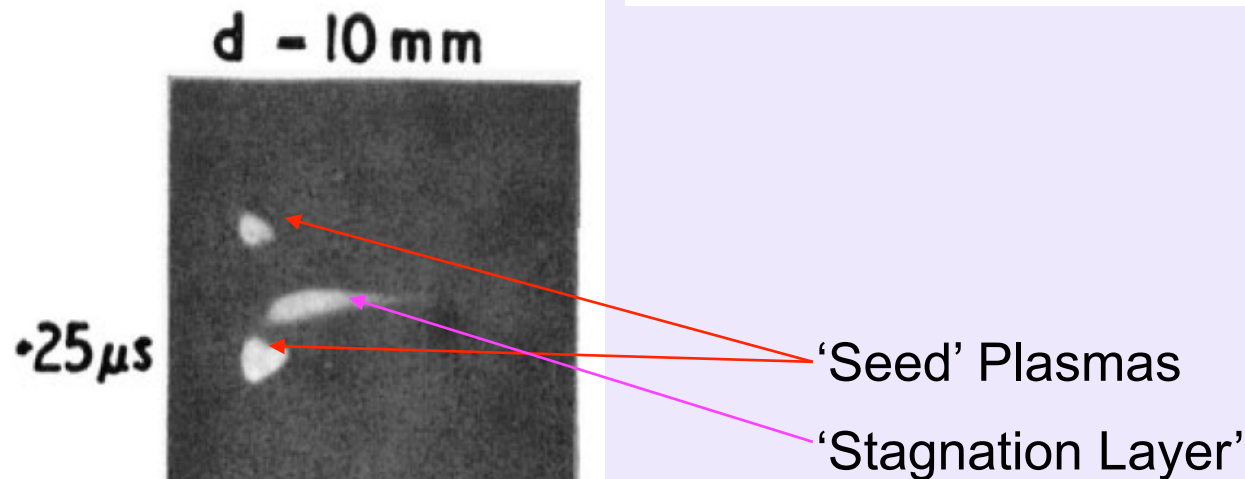
*First report - 1974*

Plasma Physics, Vol. 16, pp. 969 to 975. Pergamon Press 1974. Printed in Northern Ireland

## INTERACTIONS BETWEEN TWO COLLIDING LASER PRODUCED PLASMAS

P. T. RUMSBY,\* J. W. M. PAUL and M. M. MASOUD†  
UKAEA Research Group, Culham Laboratory, Abingdon, Berkshire, England

*(Received 29 January 1974)*





## Part II – Table-Top Colliding Plasmas

NGC2346 -  
Planetary Nebula  
Distance - 2,000 light  
years  
Extent ~ 0.4 light years

Result of the collision of two  
stars - believed that one  
became a red giant  
and swallowed its partner in  
the binary system.

Credit: Hubble Wide Field &  
Planeary Camera - Massimo  
Stiavelli (NASA)

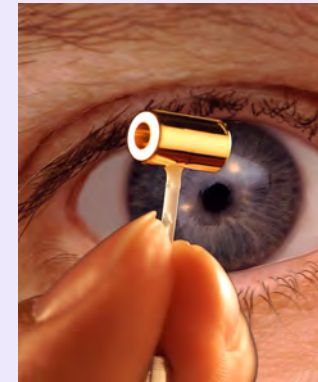
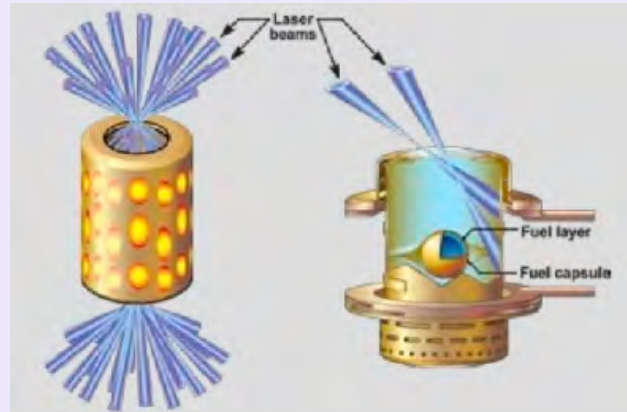
### NGC2346 - 'Colliding Stars'



# Part II – Table-Top Colliding Plasmas

Not table-top...

Hohlraum – Indirect  
Drive Fusion



PRL 110, 145005 (2013)

PHYSICAL REVIEW LETTERS

week ending  
5 APRIL 2013

## Collisionless Coupling of Ion and Electron Temperatures in Counterstreaming Plasma Flows

J. S. Ross,<sup>1</sup> H.-S. Park,<sup>1</sup> R. Berger,<sup>1</sup> L. Divol,<sup>1</sup> N. L. Kugland,<sup>1</sup> W. Rozmus,<sup>1,2</sup> D. Ryutov,<sup>1</sup> and S. H. Glenzer<sup>1</sup>

<sup>1</sup>Lawrence Livermore National Laboratory, P. O. Box 808, Livermore, California 94551, USA

<sup>2</sup>Department of Physics, University of Alberta Edmonton, Alberta, Canada T6G 2R3

(Received 22 February 2013; published 2 April 2013)

PRL 111, 085003 (2013)

PHYSICAL REVIEW LETTERS

week ending  
23 AUGUST 2013

## Experimental Characterization of the Stagnation Layer between Two Obliquely Merging Supersonic Plasma Jets

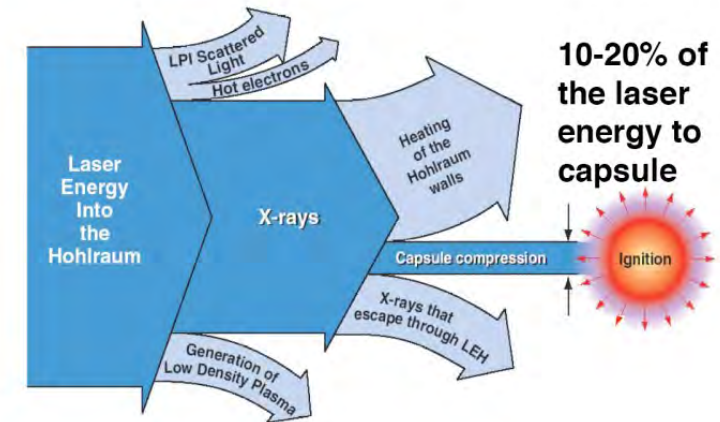
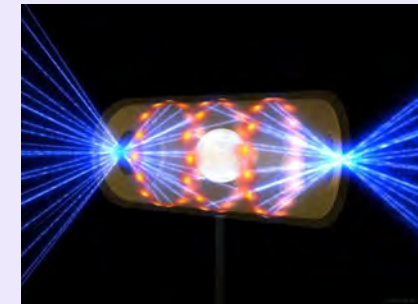
E. C. Merritt,<sup>1,2</sup> A. L. Moser,<sup>1</sup> S. C. Hsu,<sup>1,\*</sup> J. Loverich,<sup>3</sup> and M. Gilmore<sup>2</sup>

<sup>1</sup>Los Alamos National Laboratory, Los Alamos, New Mexico 87545, USA

<sup>2</sup>University of New Mexico, Albuquerque, New Mexico 87131, USA

<sup>3</sup>Tech-X Corporation, Boulder, Colorado 80303, USA

(Received 22 March 2013; published 22 August 2013)



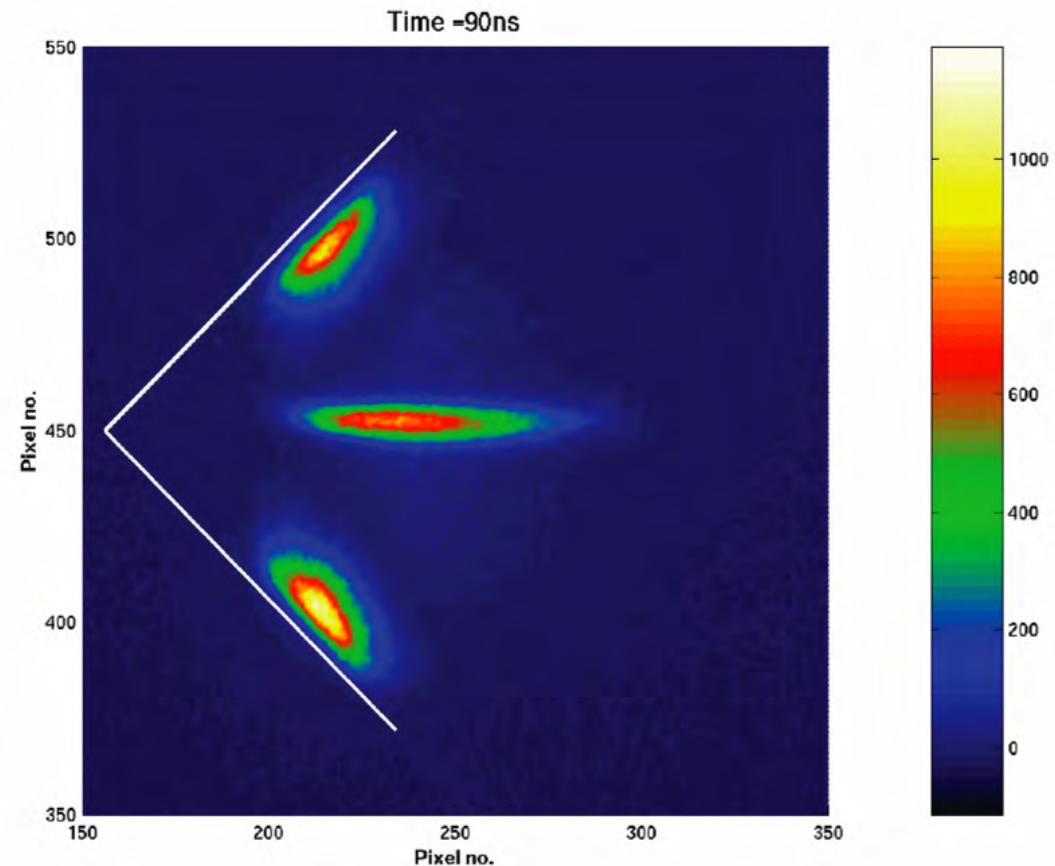
# Part II – Table-Top Colliding Plasmas

## Time Evolution:

Tight point focus on  
each Ca face:

*15 ns/ 120 mJ  
per 1064 nm beam*

ICCD: 5 ns gate  
10 ns interval



## Atomic Ca - Emission Imaging @ 423 nm

H Luna, K D Kavanagh and J T Costello, J. Appl. Phys. **101** Art No 033302 (2007)

## Part II – Table-Top Colliding Plasmas

*When plasma plumes collide two extreme scenarios can play out:*

1. **Interpenetration** - interactions are mostly via binary collisions
2. **Stagnation** - plumes **decelerate** suddenly at the collision plane, **rapid accumulation** of material, **kinetic energy** converted **into excitation energy** (glow), rapid growth of dense (stagnated) layer,

## Part II – Table-Top Colliding Plasmas

Collisionality Parameter:  $\xi = \frac{D}{\lambda_{ii}}$

Plasma - Plasma Separation  $\leftarrow D$

Ion - Ion Mean Free Path (mfp)  $\leftarrow \lambda_{ii}$

For collisions between  
opposing plumes (1, 2)

$$\lambda_{ii}(1-2) = \frac{m_i^2 v_{12}^4}{4\pi e^4 Z^4 n_e \ln(\Lambda_{12})}$$

$\lambda_{ii} \gg D \rightarrow$  Interpenetration

$\lambda_{ii} \sim D \rightarrow$  'Soft' Stagnation

$\lambda_{ii} \ll D \rightarrow$  'Hard' Stagnation

***Slow moving and dense  
plumes are more likely  
to stagnate !***

P. W. Rambo and J. Denavit, Phys. Plasmas 1 pp 4050 - 4060 (1994)

J Dardis and J T Costello, Spectrochimica Acta Part B 65 pp627-635 (2010)



## Part II – Table-Top Colliding Plasmas

**Collisionality Parameter:**  $\xi = \frac{D}{\lambda_{ii}}$

Plasma - Plasma Separation  
Ion - Ion Mean Free Path (mfp)

**For collisions between opposing plumes (1, 2)**

$$\lambda_{ii}(1-2) = \frac{m_i^2 v_{12}^4}{4\pi e^4 Z^4 n_e \ln(\Lambda_{12})}$$

**Key point:** One can engineer stagnation layer characteristics; ‘hardness’, density, temperature, shape, etc. by varying geometry ( $D$ ) and laser-target interaction physics ( $mfp, \lambda_{ij}$ ) - application specific.....

## Part II – Table-Top Colliding Plasmas

Collisionality Parameter:  $\xi = \frac{D}{\lambda_{ii}}$

Plasma - Plasma Separation

Ion - Ion Mean Free Path (mfp)

**For collisions between opposing plumes (1, 2)**

$$\lambda_{ii}(1-2) = \frac{m_i^2 v_{12}^4}{4\pi e^4 Z^4 n_e \ln(\Lambda_{12})}$$

*So perhaps a stagnation layer could be considered to be a useful alternative to single plumes for e.g., - laboratory astrophysics, plasma XRLs (Bleiner et al., Journal of Laser Physics, 23, 056003, (2013), pulsed laser deposition (PLD), pre-heated targets for bright laser plasma light sources (EUVL), LIBS, LA-ICP-MS, etc.*

## Part II – SL Diagnostics

### ***Stagnation layer evolution/parameterisation***

1. Fast Photography - all phases (0 – 1000 ns)
2. Interferometry - usable early phase (0 – 100 ns)
3. Spectroscopy - usable mid phase (50 - 500 ns)
4. Faraday cup and ESA - ions
5. Others: Shadowgraphy, Moire deflectometry, etc.

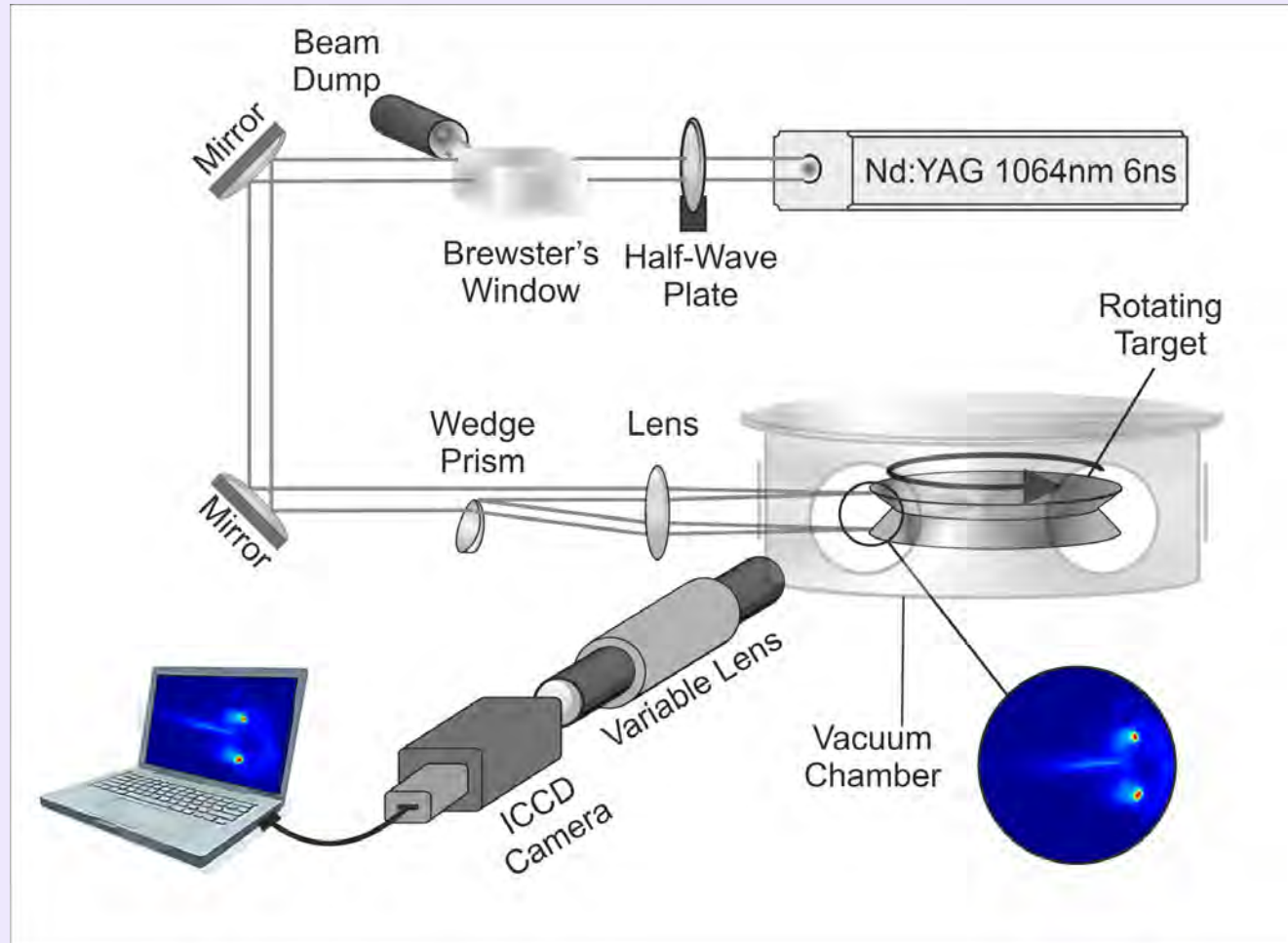
D Doria, K D Kavanagh, J T Costello and H Luna, Meas. Sci. Technol. **17** 670 (2006)

P Hough, T J Kelly, C Fallon, C McLoughlin, P Hayden, E T Kennedy, J-P Mosnier, S S Harilal and J T Costello, Meas. Sci. Technol. **23** 125204 (2012)

P Yeates, C Fallon, E T Kennedy and J T Costello, Physics of Plasmas **20**, 093106 (2013)

# Part II – Table-Top Colliding Plasmas

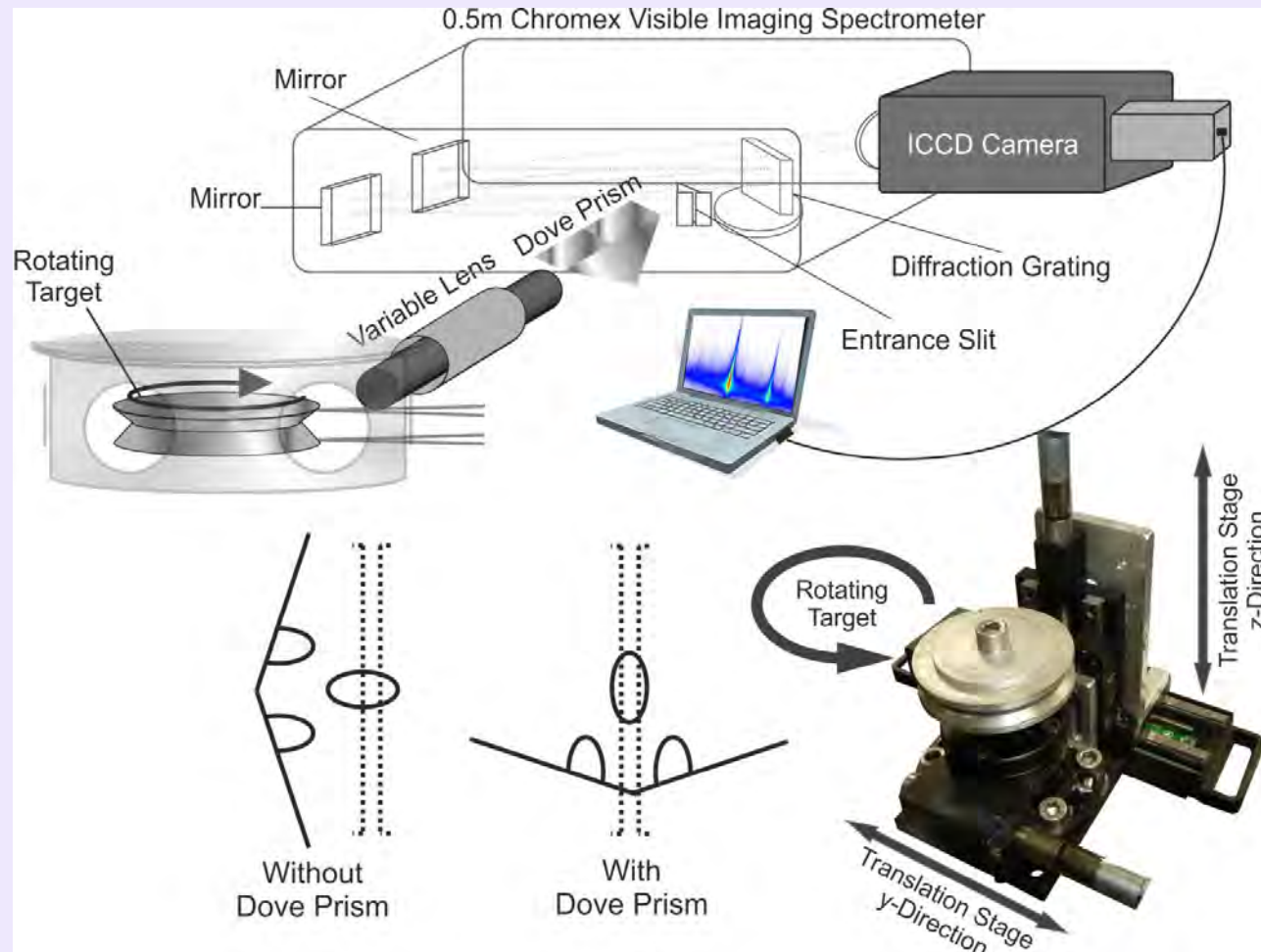
## ICCD Photography: Time and angle resolved.



C Fallon, P Hayden, N Walsh, E T Kennedy and J T Costello,  
Journal of Physics: Conference Series **548** 012036 (2014)

# Part II – Table-Top Colliding Plasmas

## ICCD Spectroscopy: Time and space resolved.



C Fallon, P Hayden, N Walsh, E T Kennedy and J T Costello,  
Physics of Plasmas **22**, 093506 (2015)

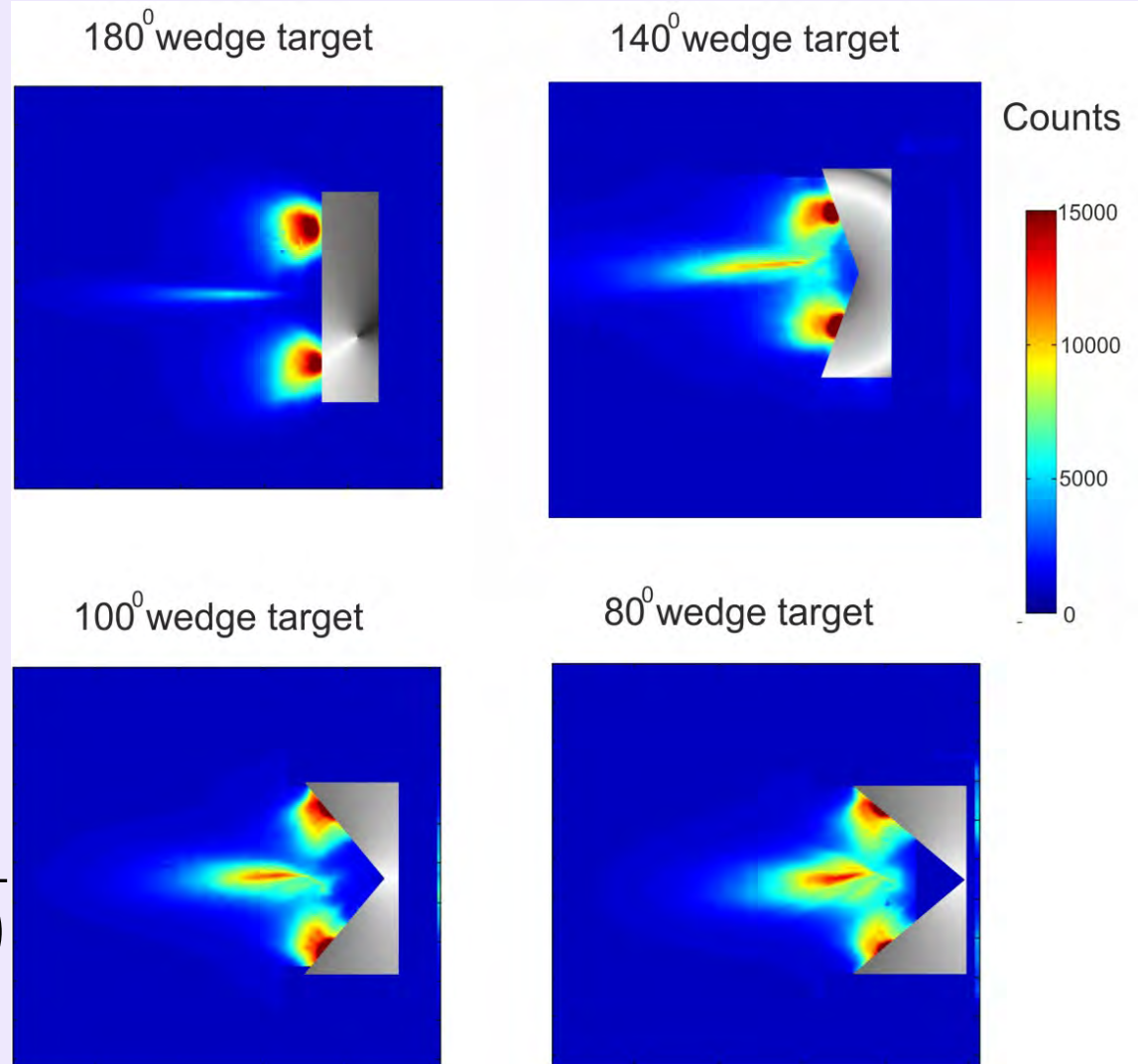


# Part II – Table-Top Colliding Plasmas

**Imaging - effect of seed collision angle**

$$\xi = \frac{D}{\lambda_{ii}}$$

$$\lambda_{ii}(1-2) = \frac{m_i^2 v_{12}^4}{4\pi e^4 Z^4 n_e \ln(\Lambda_{12})}$$



C Fallon, P Hayden, N Walsh, E T Kennedy and J T Costello, J. Phys: Conference Series **548** 012036 (2014)

## Part II – Table-Top Colliding Plasmas

# Time, Space and Angle- Resolved UV-Vis Spectroscopy

## Stigmatic Spectrometer + ICCD

## Part II – Table-Top Colliding Plasmas

### Extracting Densities and Temperatures

Get densities from Stark broadened lines  
– assume electron collisions dominant -

$$\Delta\lambda_{\text{width}} = 2W(Ne/10^{16}) + 3.5A(Ne/10^{16})^{1/4} \\ \times (1 - 1.2N_D^{-1/3})W(Ne/10^{16}),$$

Then temperatures from line intensity ratio for successive ions stages - assumes LTE

$$\frac{I'}{I} = \frac{f'g'\lambda^3}{fg\lambda'^3} (4\pi^{3/2}a_0^3Ne)^{-1} \left(\frac{kT}{E_H}\right)^{3/2} \exp\left(\frac{E - E' - E_\infty}{kT}\right)$$



NCPST



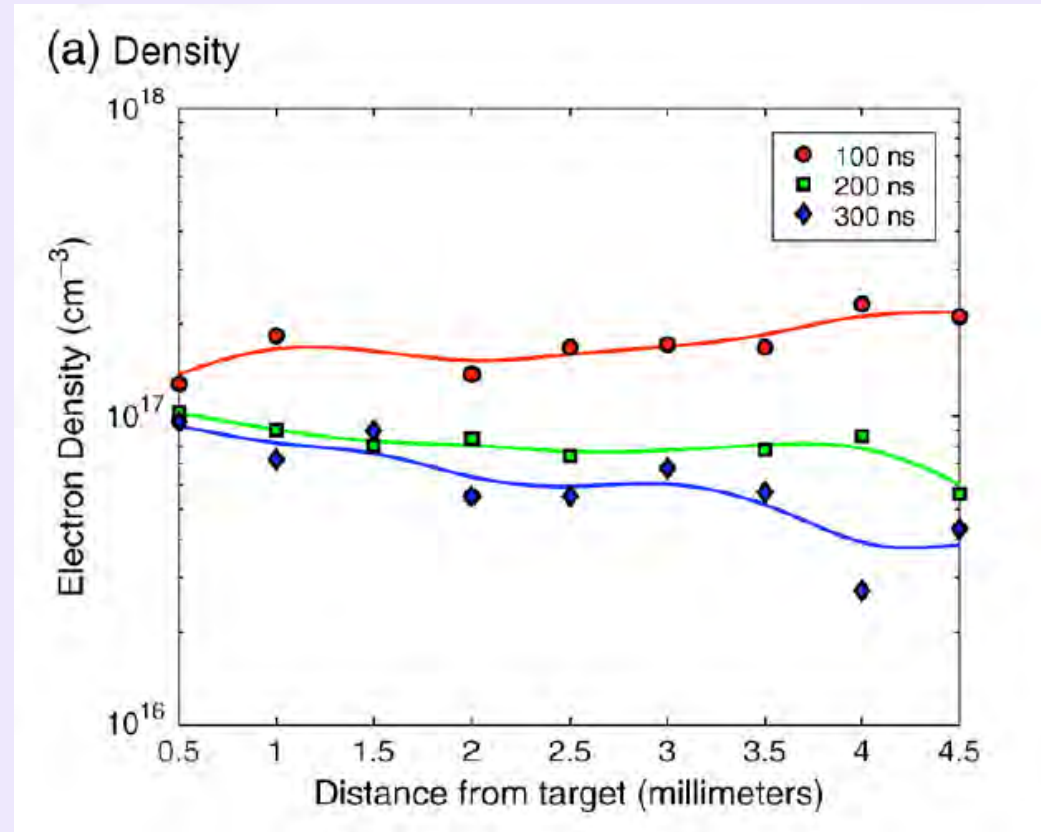
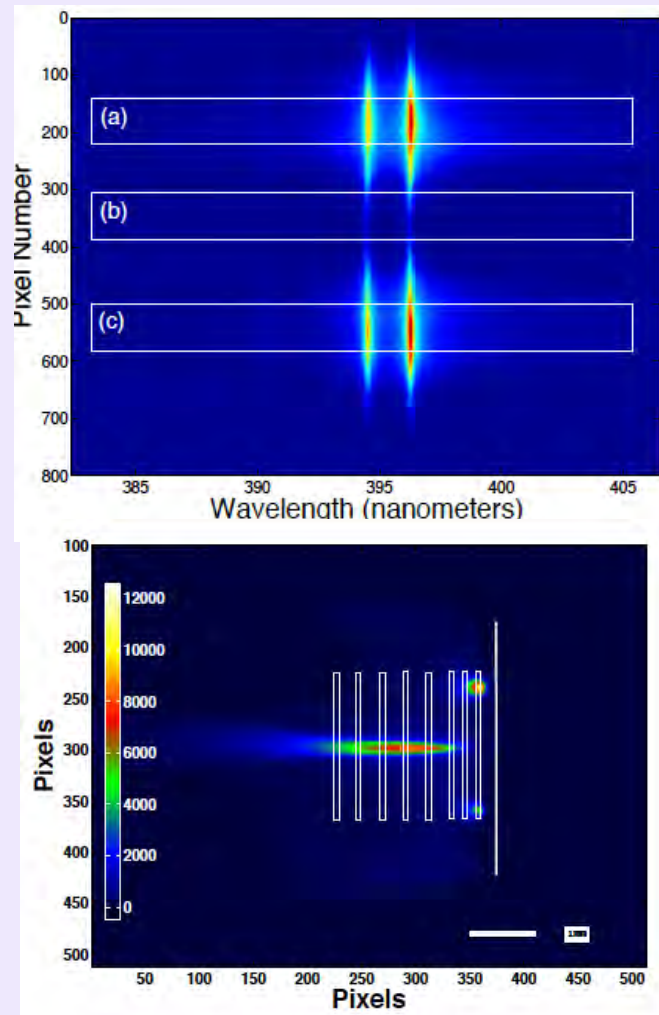
EXTATIC

Physics Colloquium,  
Kassel Uni. 14-12-2017



# Part II – Table-Top Colliding Plasmas

## Stagnation Layer (Al): *Electron density (Stark, Al Doublet)*



~100 mJ/170 ps/1064 nm 'seed' beam  
J Dardis and J T Costello, Spectrochimica Acta  
Part B **65** pp 627-635 (2010)

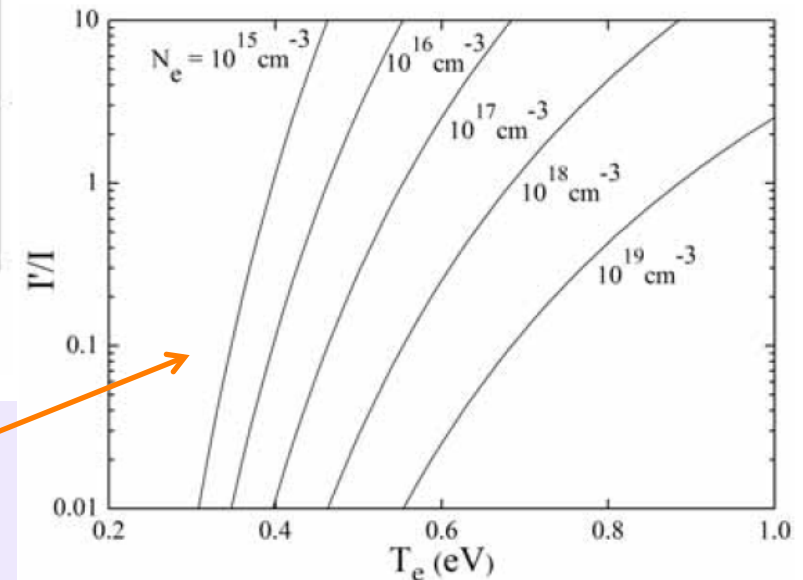
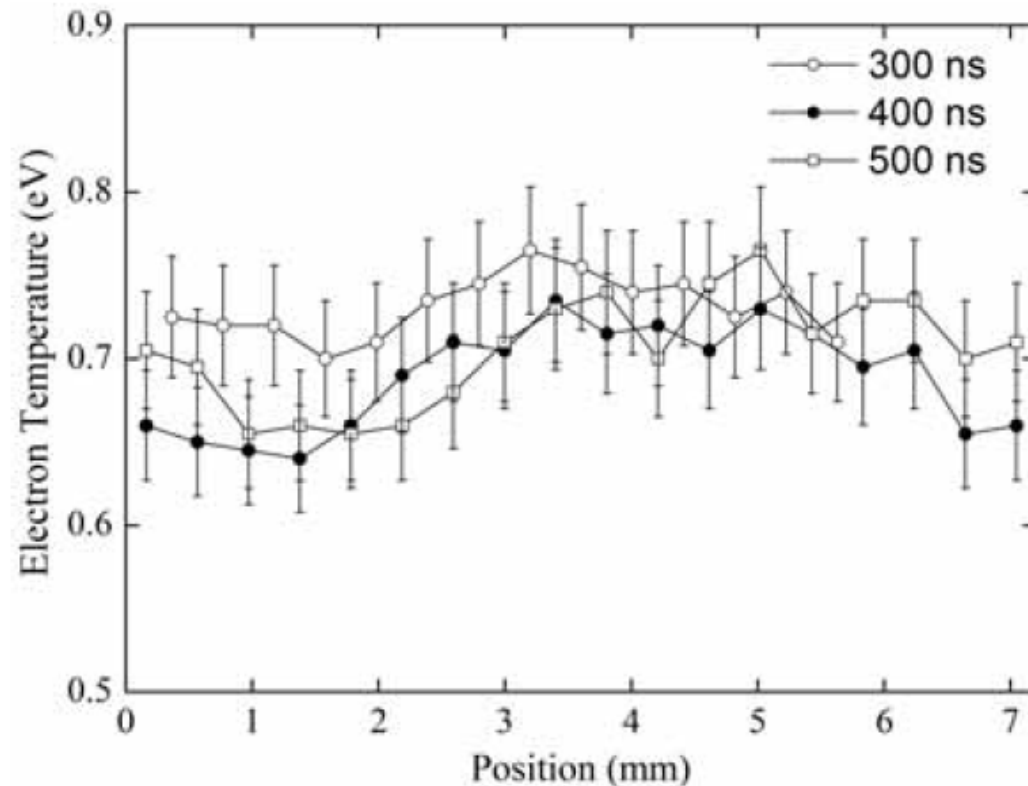
# Part II – Table-Top Colliding Plasmas

## Stagnation Layer (Ca): Electron Temp. – Line ratios

~70 mJ/355 nm/  
6 ns/ 'seed' beam

$$T_e \approx 0.7 \text{ eV}$$

Ratio of 393 nm (Ca+) to  
423 nm (Ca) lines



$$\frac{I'}{I} = \frac{f' g' \lambda^3}{f g \lambda'^3} (4 \pi^{3/2} a_0^3 N_e)^{-1} \left( \frac{kT}{E_H} \right)^{3/2} \exp \left( \frac{E - E' - E_\infty}{kT} \right)$$

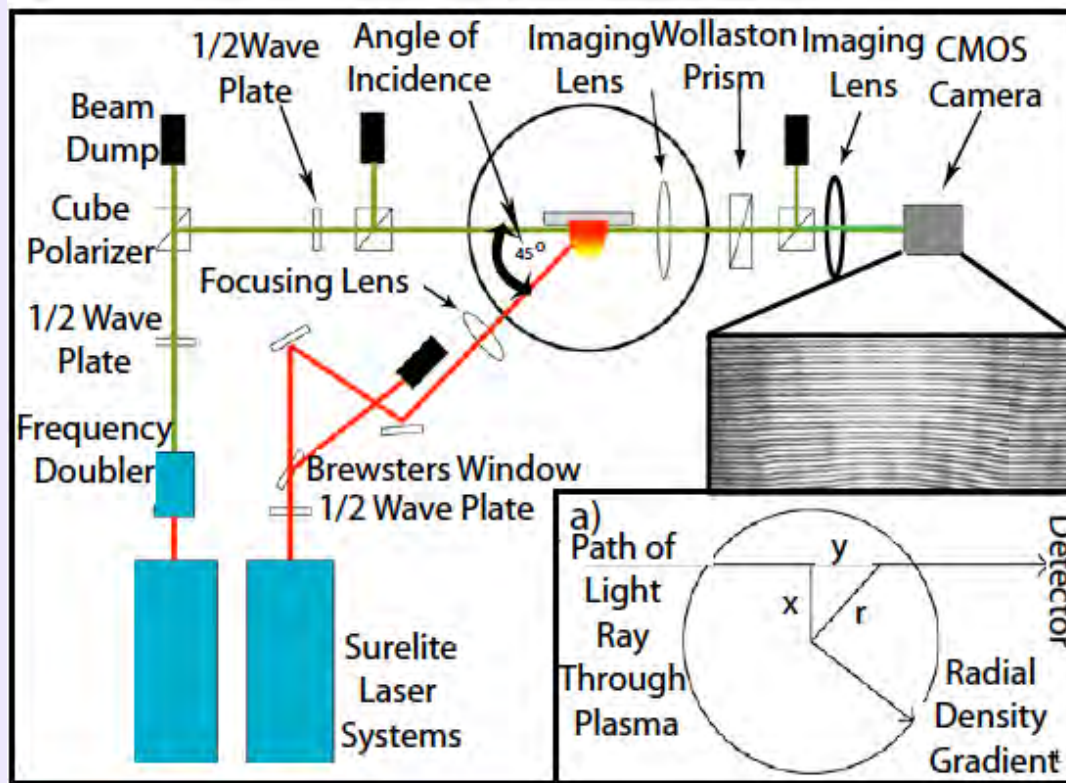


# Part II – Table-Top Colliding Plasmas

**Stagnation Layer (Al):** *Electron density*

**Spectroscopy** - only works well for  $\Delta t > 100$  ns

Spectra dominated by continuum emission - *solution* - time resolved interferometry



**Experimental Setup-**

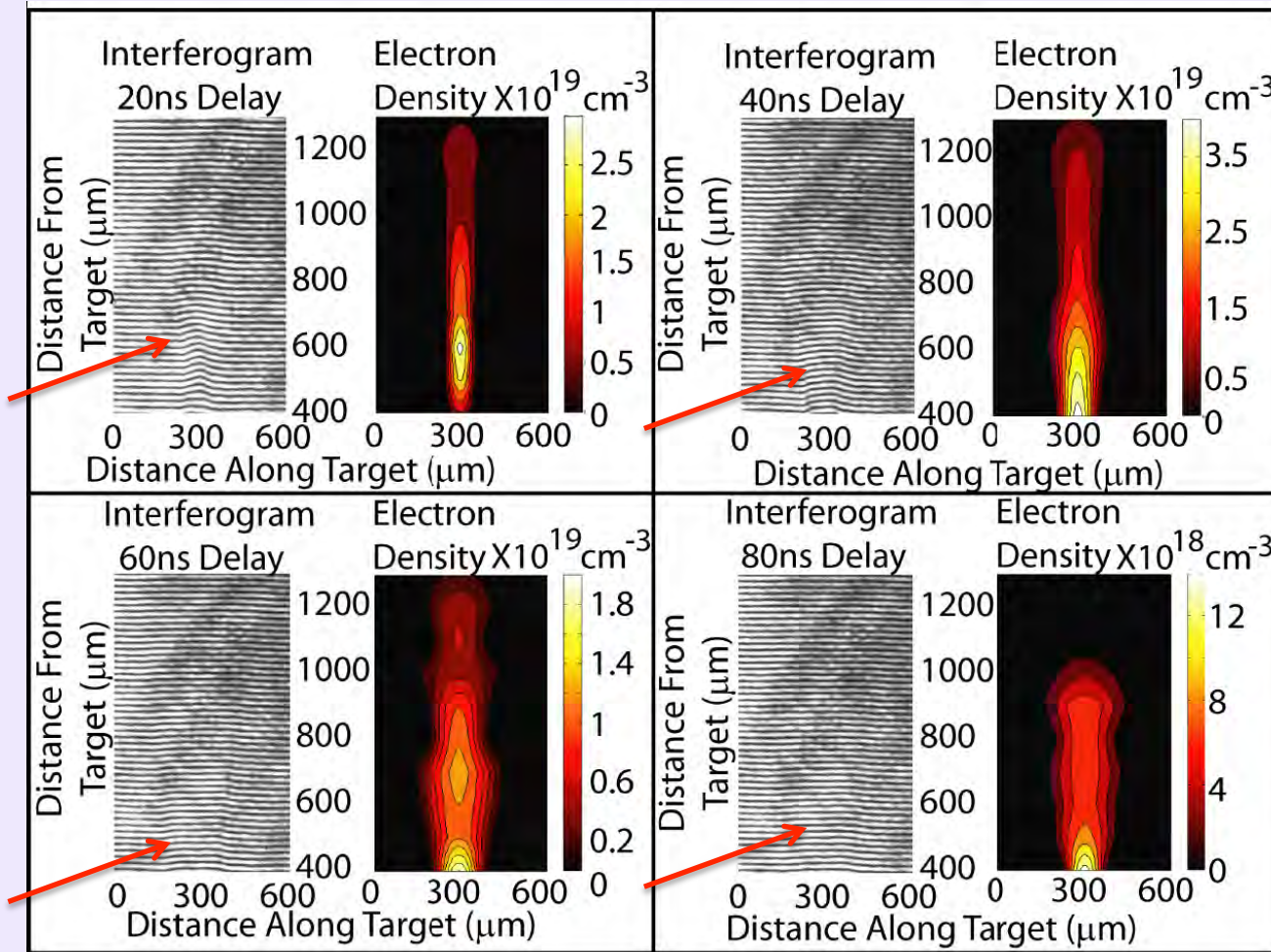
***Nomarski  
Interferometer***

P Hough, C McLoughlin, T J Kelly, S S Harilal, J-P Mosnier and J T Costello, Appl. Surf. Sci. **255** 5167 (2009)

# Part II – Table-Top Colliding Plasmas

## *Electron Stagnation* at the Collision Plane

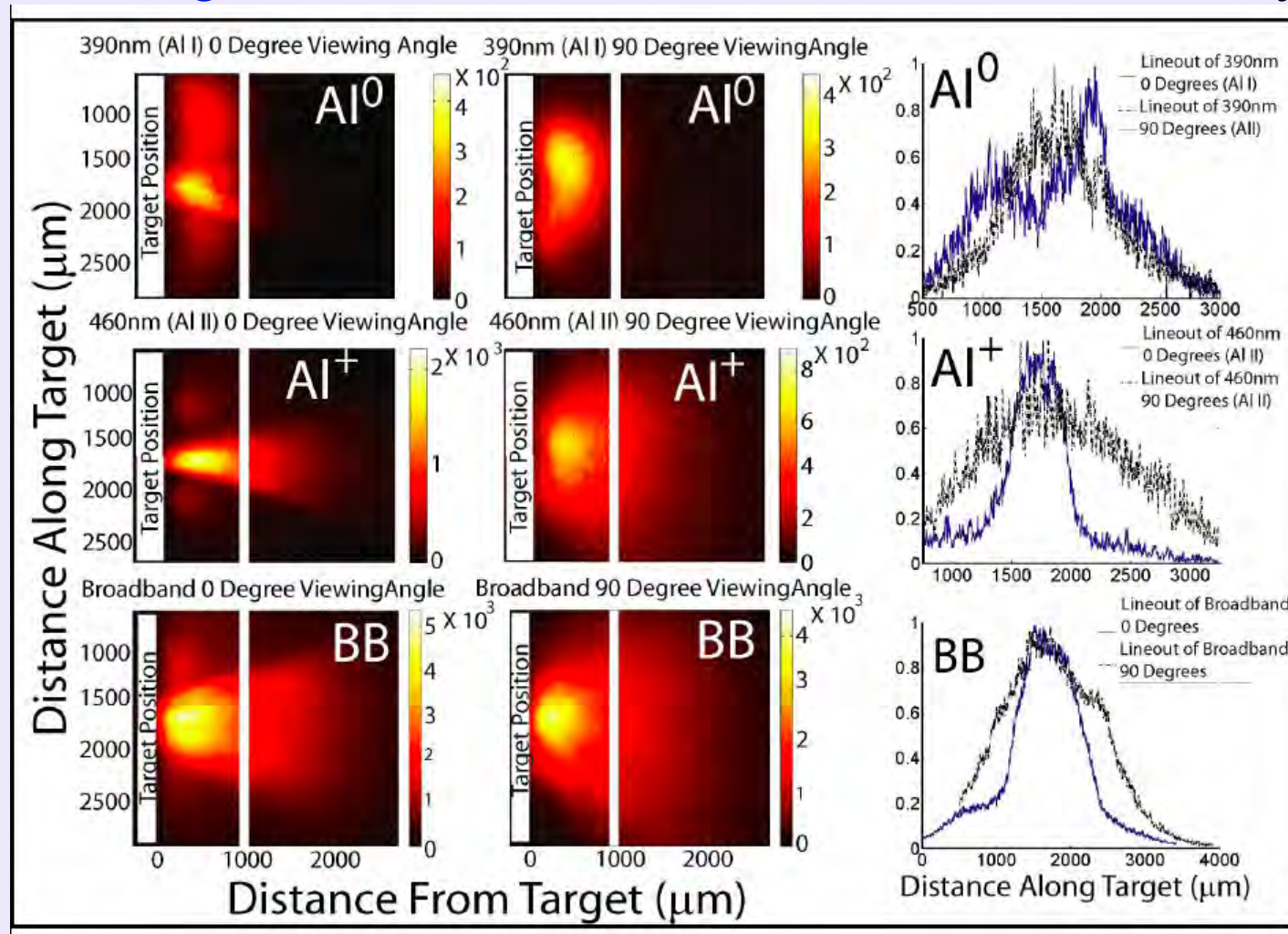
P Hough, C McLoughin, T J Kelly, S S Harilal, J P Mosnier and J T Costello, J. Phys. D: Appl. Phys. **42** 055211 (2009)





# Part III – Colliding Annular Plasmas

## Colliding Aluminium Plasmas - Individual Fluid Asymmetry - cf: $\text{Al}^+$



*Angle  
Resolved  
Imaging:*

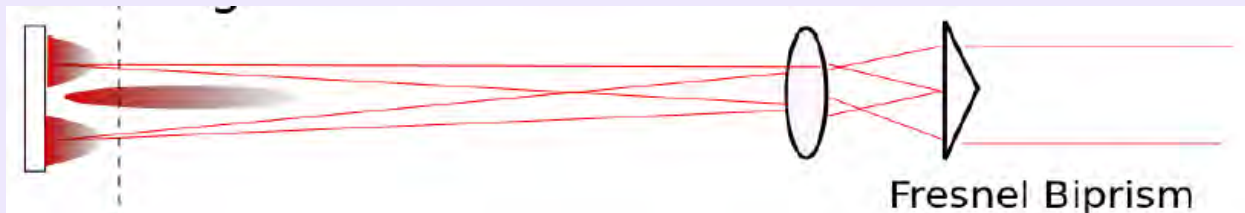
*Al,  $\text{Al}^+$  &  
Broadband*

*~300 mJ/ 6 ns/  
1064 nm  
'seed' beam*

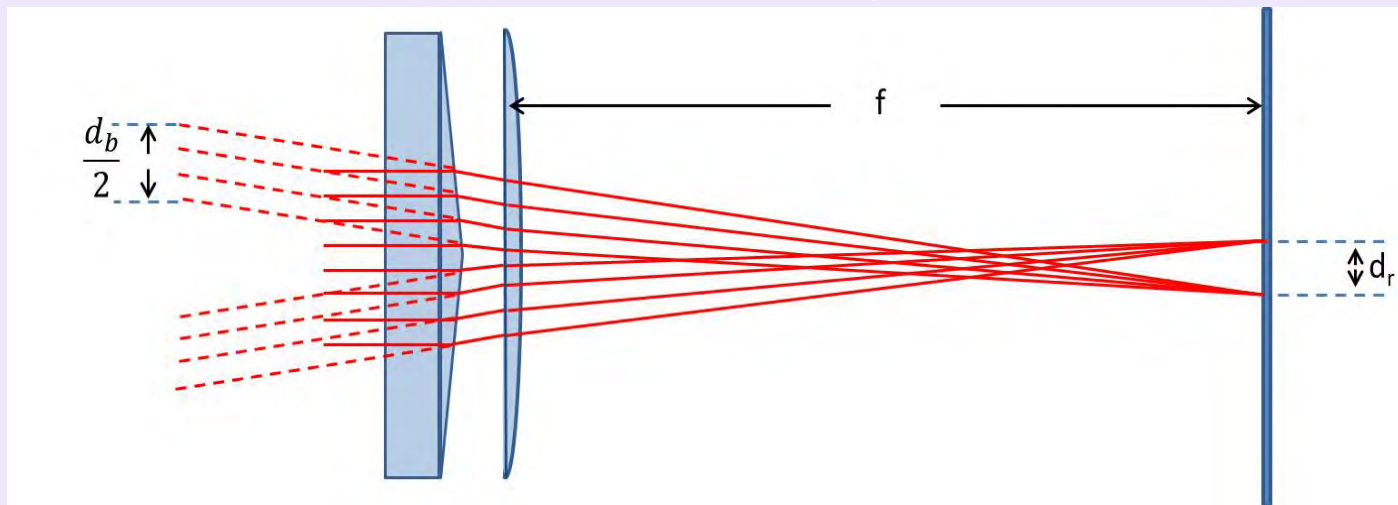
P Hough, C McLoughlin, S S Harilal, J-P Mosnier and J T Costello, J. Appl. Phys. 107 024904 (2010)

## Part III – Colliding Annular Plasmas

Symmetric seed plasmas.... Use a Biprism...



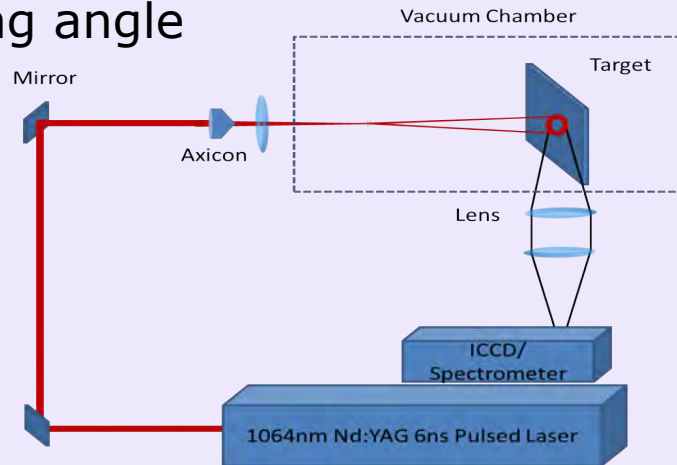
Axicon => Bessel Beam + Focusing => Ring Plasma



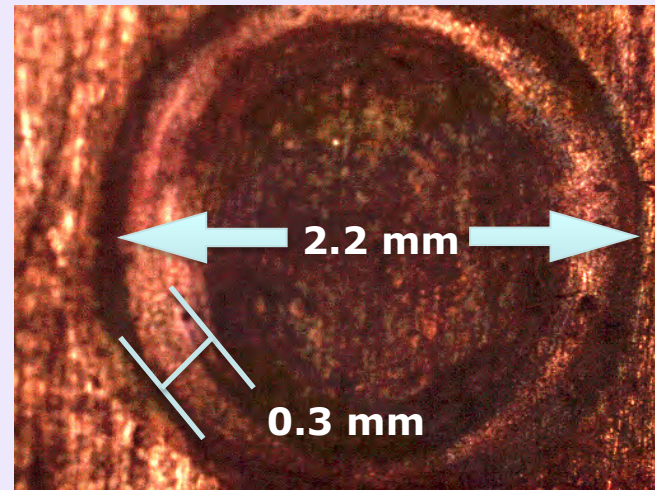
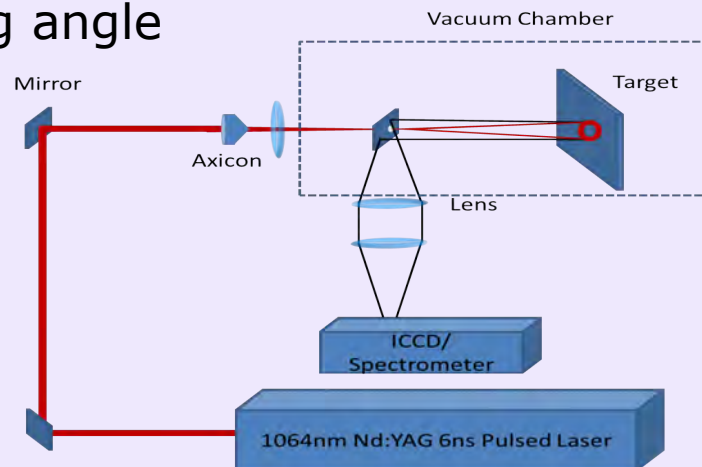
$$d_r = 2.f.Tan\{(n-1)\alpha\} \quad \alpha = \text{apex angle}$$

# Part III – Colliding Annular Plasmas

90° viewing angle



0° viewing angle

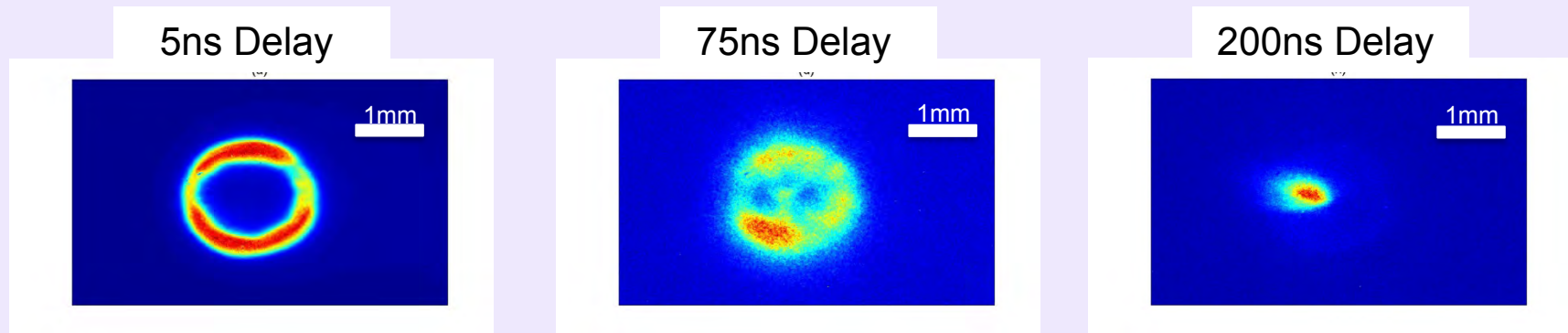


- Area of annulus:  $0.07 \text{ cm}^2$
- Power Density:  $1.0 \text{ GW/cm}^2$

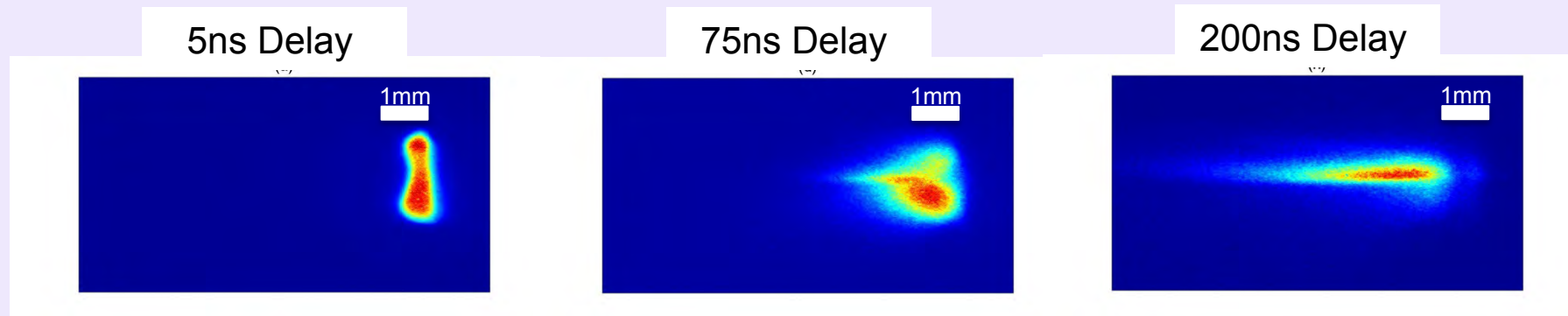


# Part III. Colliding Annular Plasmas

- 5ns gate width, 0° viewing angle imaging.



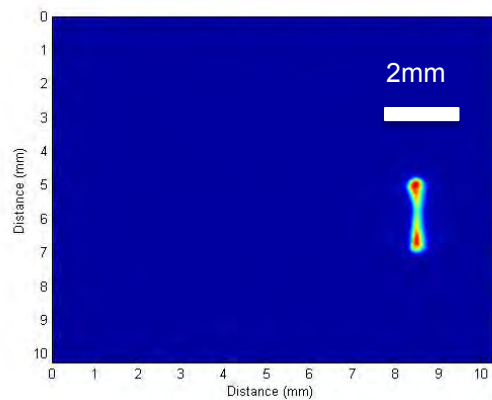
- 5ns gate width, 90° viewing angle imaging.



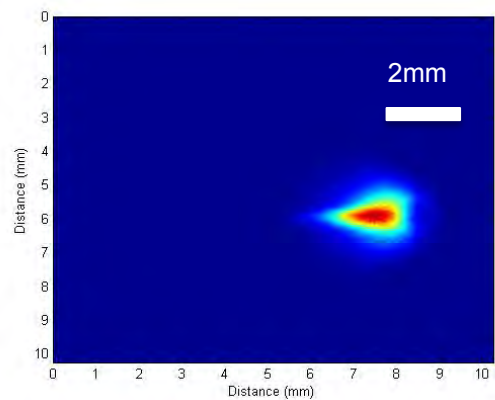
# Part III. Colliding Annular Plasmas

Axicon

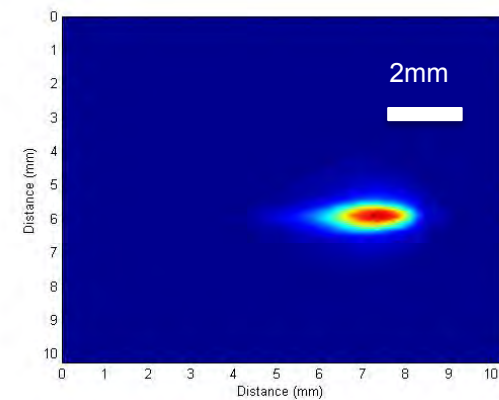
Delay: 10 ns  
Gate W: 5ns



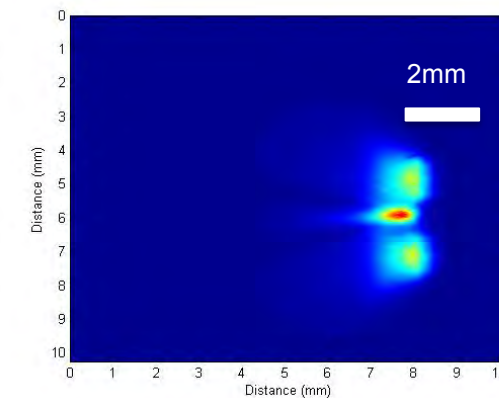
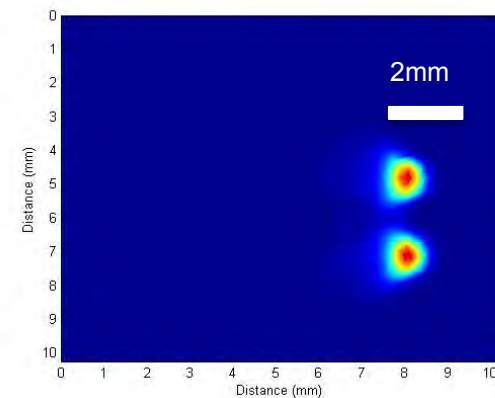
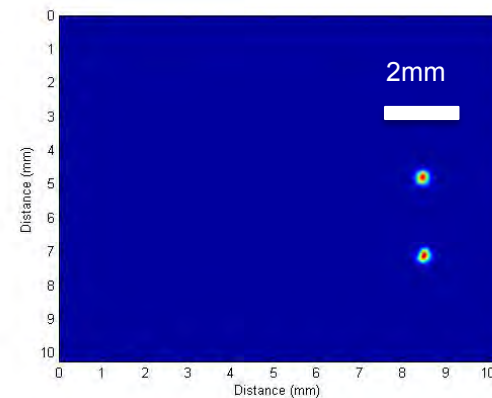
Delay: 30 ns  
Gate W: 5ns



Delay: 60 ns  
Gate W: 5ns



Bi-prism

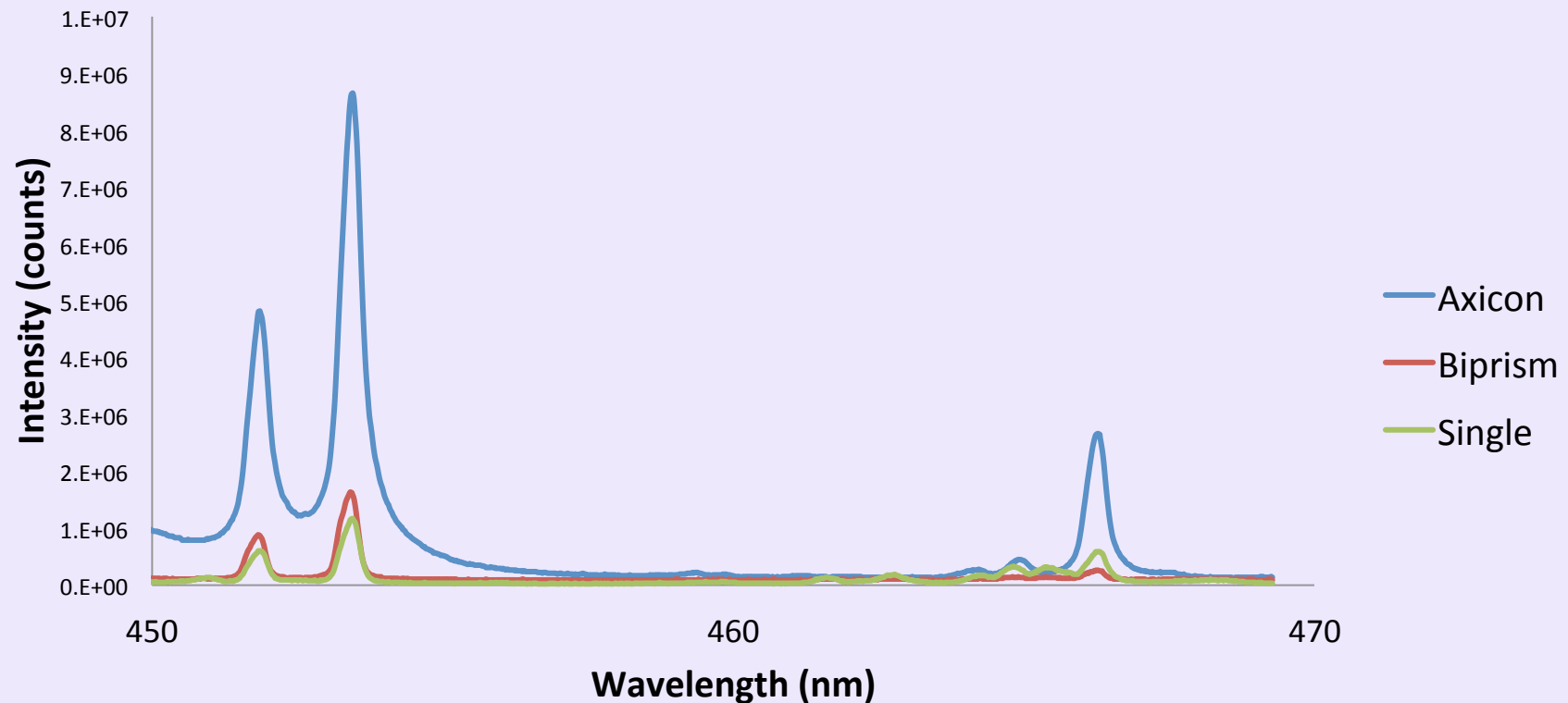


## Part III. Colliding Annular Plasmas

Time and space integrated Al spectrum. Laser energy 36mJ per pulse.  
1e-6mbar ambient pressure. 600ns gate.

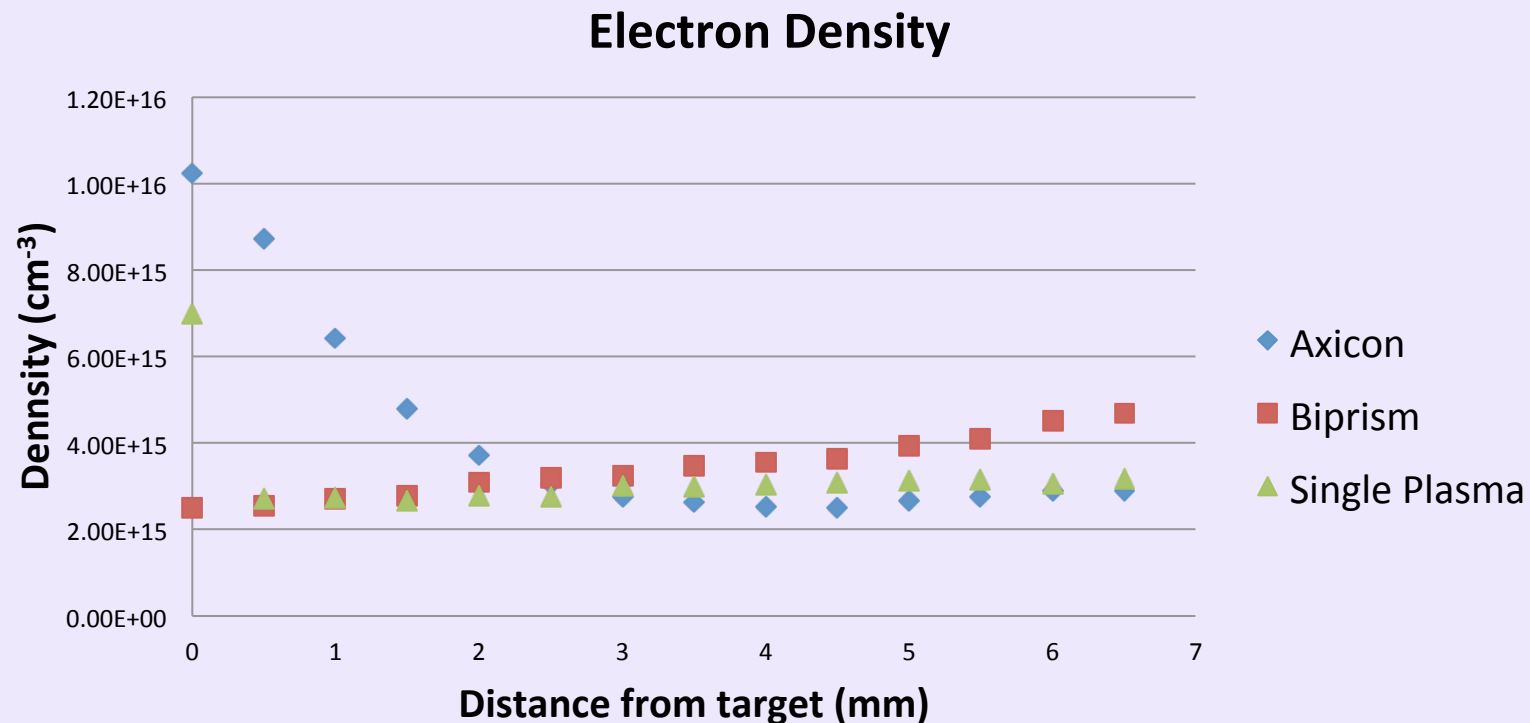
- 451.3nm ( $\text{Al}^{2+}$ ) and 452.8nm ( $\text{Al}^{2+}$  (used for ne determination))
- 466.3nm ( $\text{Al}^+$ )

### Aluminium Spectrum



## Part III. Colliding Annular Plasmas

Space resolved, time integrated density profile of aluminium.  
Laser energy 36mJ per pulse. 1e-6mbar ambient pressure.  
600ns gate



Low initial density for the biprism case due since the slit is aligned along an axis located between the two seed plasmas.

# What have we learned so far?

1. Strong stagnation in table-top colliding plasmas due to large value of the collisionality parameter ( $\zeta$ )
2. Degree of confinement/hardness of the stagnation layer can be controlled by designing the value of  $\zeta$
3. Density and temperature are strongly dependent on the seed laser wavelength – so can be selected/controlled via laser parameters
4. Both temperature and density increase with decreasing wedge angle – so can be selected/controlled controlled via target geometry
5. Densities and temperatures remain at higher values for longer in stagnation layers – stagnation layers tend to be stable



# What have we learned so far ?

6. Compared to single plume the duration of self emission from atoms and ions lasts longer than from single plumes
7. Stagnation layers becomes quite uniform  $>100$  ns after SL formation - stagnation layers tend to be stable
8. Ergo SLs look potentially attractive for applications in laser ablation analytical sciences [LAAS] and perhaps as an alternative [PLD] source and as sources of atoms, ions, clusters,...
9. We believe that more than one process determines species transport in SL (not shown but discussed in Fallon et al (2015))
10. 'Velocities' of SL species drop as the wedge angle decreases - ion/ neutral 'velocity' ratio generally  $>3$  (not shown but discussed in Fallon et al. (2015))

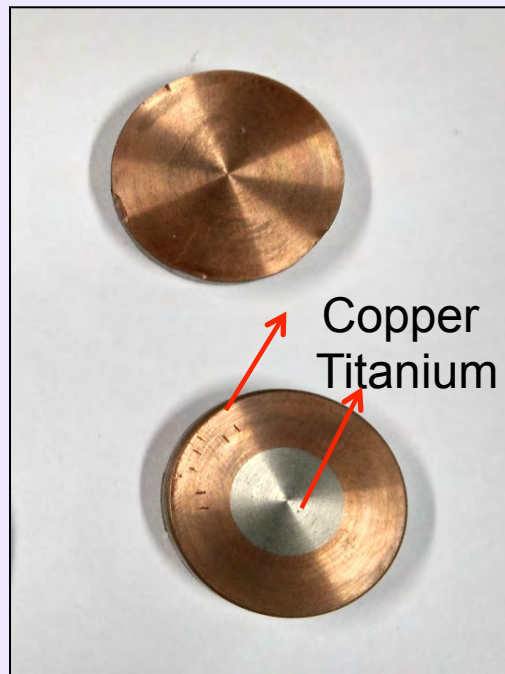
## Part IV. Key Properties–Potential Applications

1. **The most important of these is flexibility.** Since a stagnation layer is a partially ionized plasma, it has **many free parameters, which can be tuned** for specific applications
2. Opacity is a problem in LIBS as radiation from the core is reabsorbed in the cooler corona - we know that the stagnation layer can be **heated uniformly to reduce/eliminate opacity**
3. The stagnation layer requires mainly some additional focusing optics and novel target designs and so it is **easily retrofitted to existing experiments or commercial systems.**
4. The emitting size of a re-heated stagnation layer **can be geometrically engineered to readily match the acceptance angle** of both optical and mass spectrometric systems.
5. The **stagnation layer is already a pre-heated or proxy plasma** for e.g., double pulse LIBS.

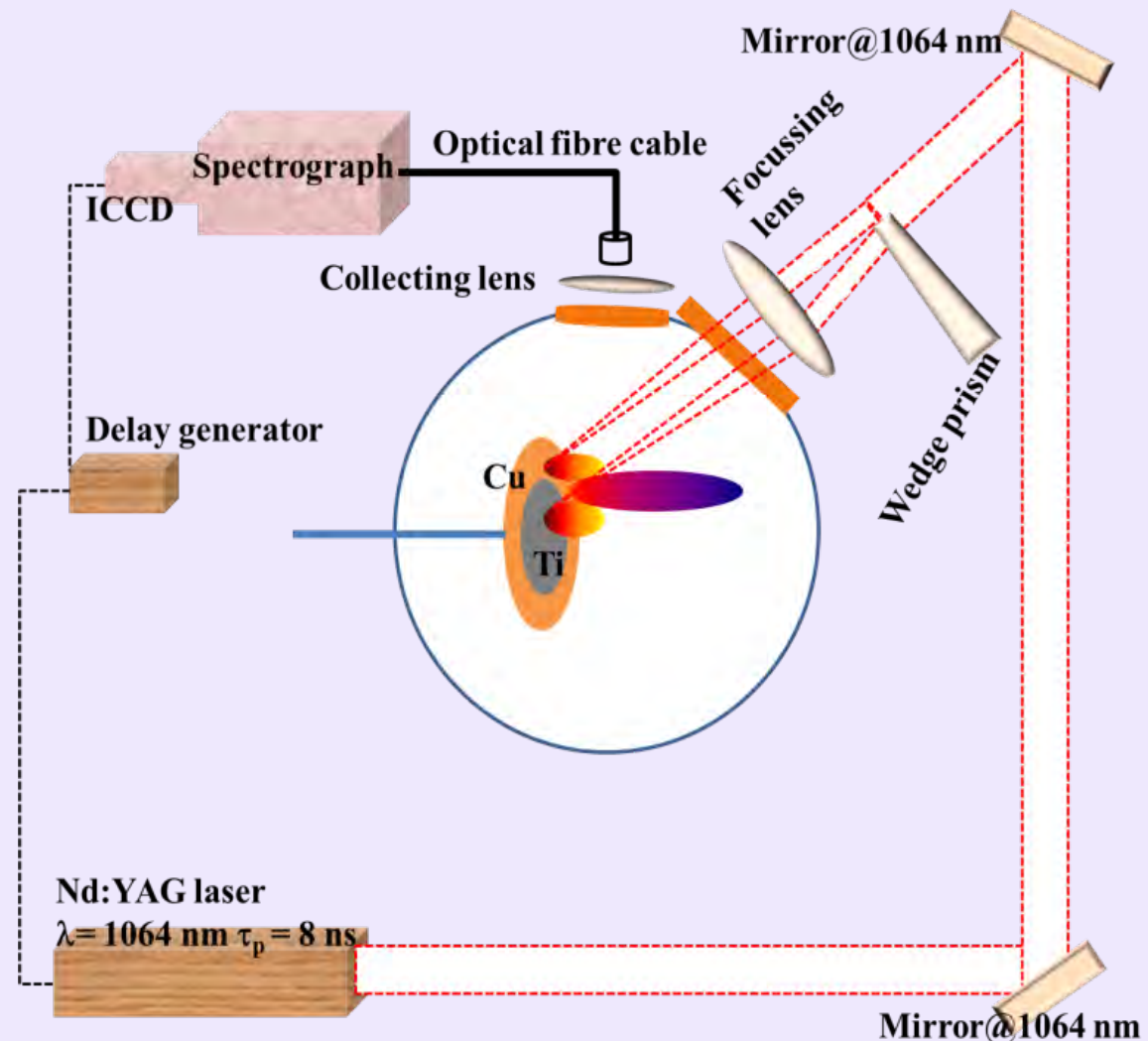
## Part IV. Key Properties–Potential Applications

6. We have new experimental evidence that we can **preferentially generate high nanoparticle fluxes** in nanosecond colliding plasmas - P K Pandey, R K Thareja and J T Costello, Physics of Plasmas 23, 103516 (2016)
7. The **position of the layer** in space **can be adjusted** by the target geometry and relative energy in each of the laser beams
8. It also **does not suffer from clogging** as happens in some EUVL Sn-drop and biomolecule injector system applications
9. As we have seen stagnation layer electron **densities ranging up to a few  $10^{19} \text{ cm}^{-3}$  are readily obtained** - even higher densities are possible with  $3\omega$  Nd-YAG seed lasers.
10. We also **have preliminary signs that we can control the ion energy spectrum** to improve the resolution in TOF applications, reduce ion / debris damage in EUV optical systems, etc.

# Part IV. Key Properties–Potential Applications



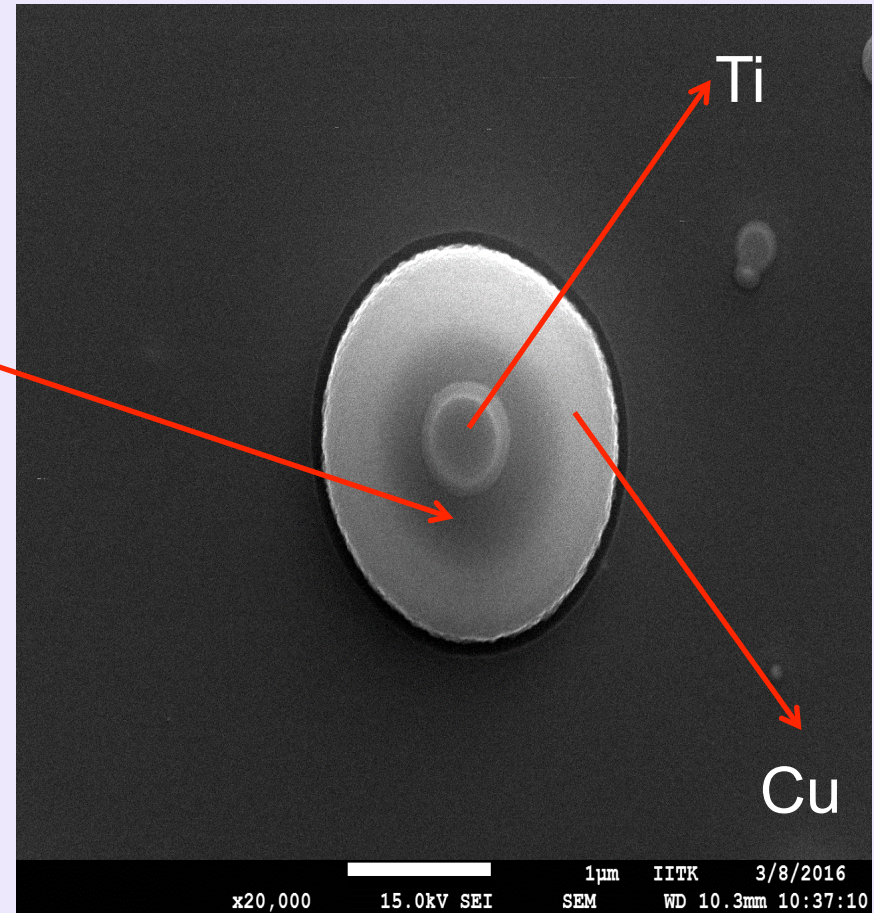
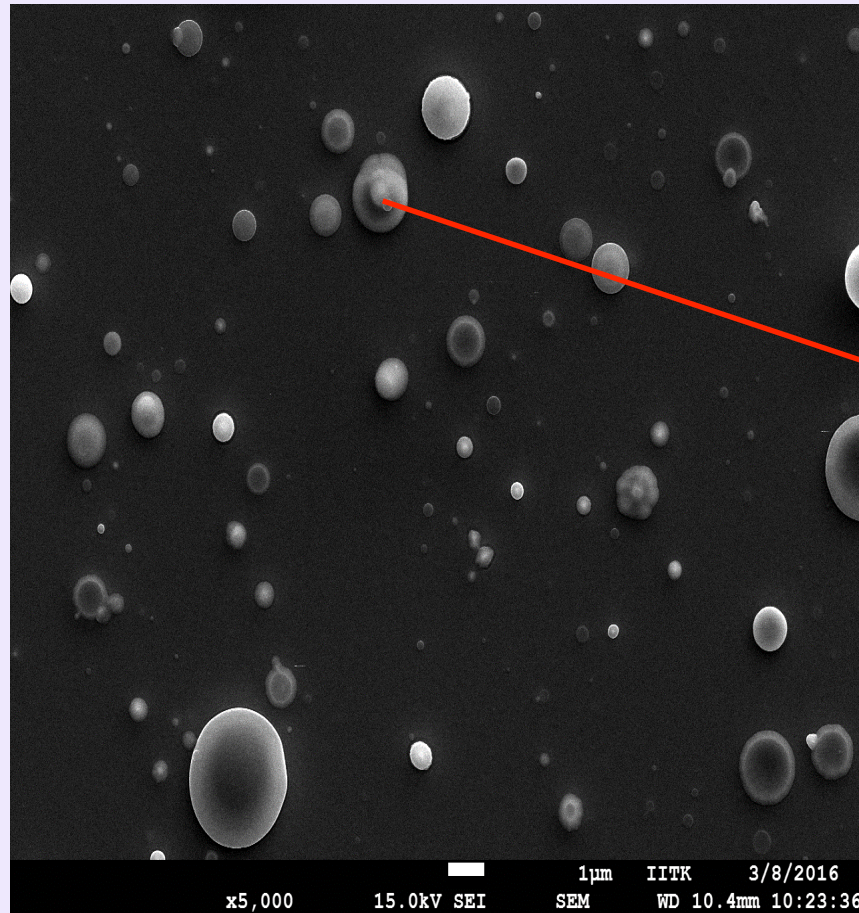
1. Distance between target and substrate = 4 cm
2. Laser energy = 50 mJ / Pulse for each splitted beam
3. Focal spot size = 300  $\mu\text{m}$
4. Beam incident on target surface at 45 degree.





## Part IV. Key Properties–Potential Applications

**TiCu alloy formation by colliding Ti and Cu plasmas –  
Collaboration with IIT Kanpur – SEM and EDX**

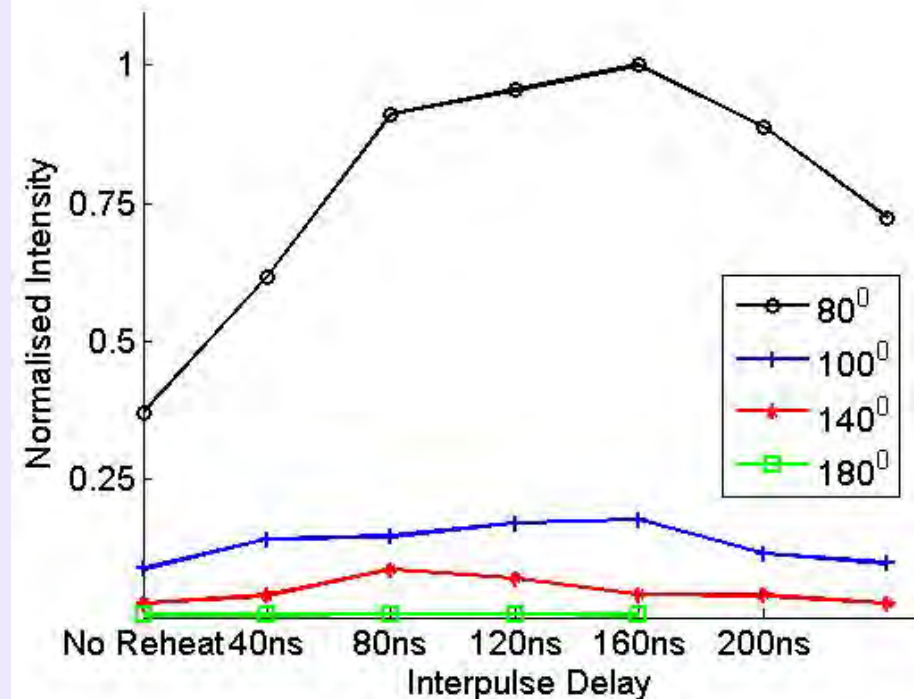
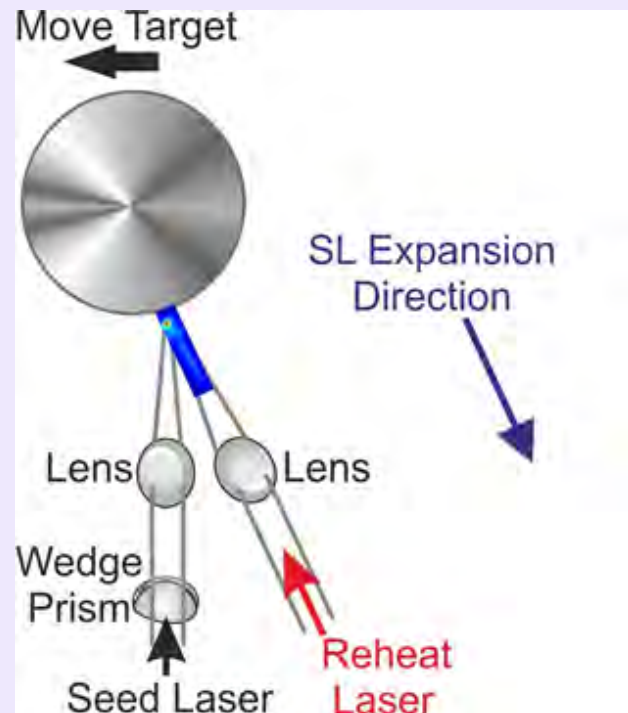




# Part IV. Key Properties–Potential Applications

## Re-excitation of SLs – towards DP LIBS

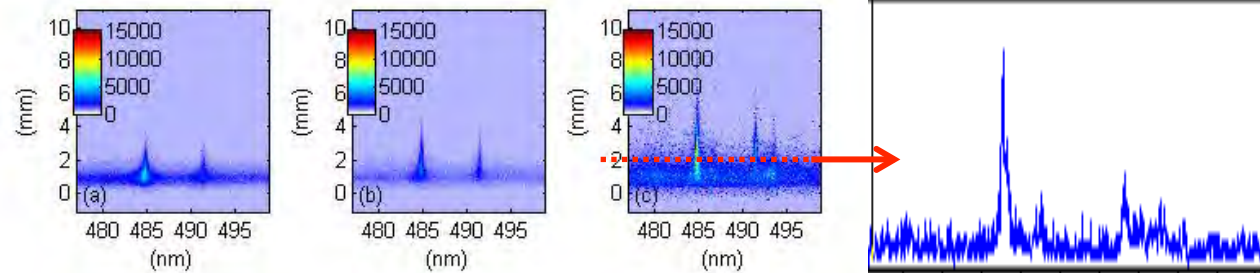
4 Wedges – 485 nm line -  $\text{Sn}^{2+}$  - time & space integrated



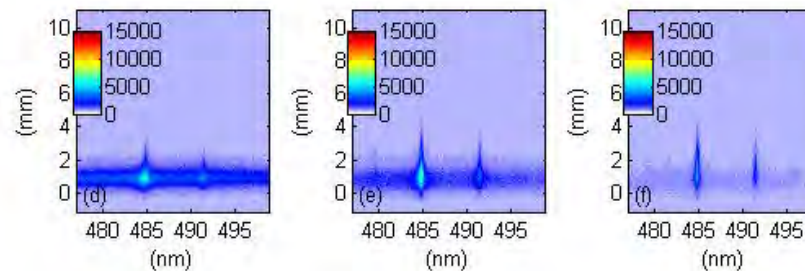
# Part IV. Key Properties–Potential Applications

## 4 Wedges – 485 nm line - $\text{Sn}^{2+}$ - time & space integrated

No Reheat

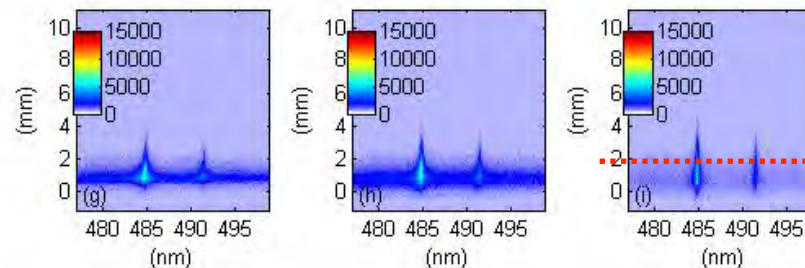


**Inter-pulse Delay**  
80 ns Reheat



$\text{Sn}^{2+}$  peak is typ.  
170% brighter  
(Factor of 2 for a  
 $\text{Sn}^+$  line)

120 ns reheat

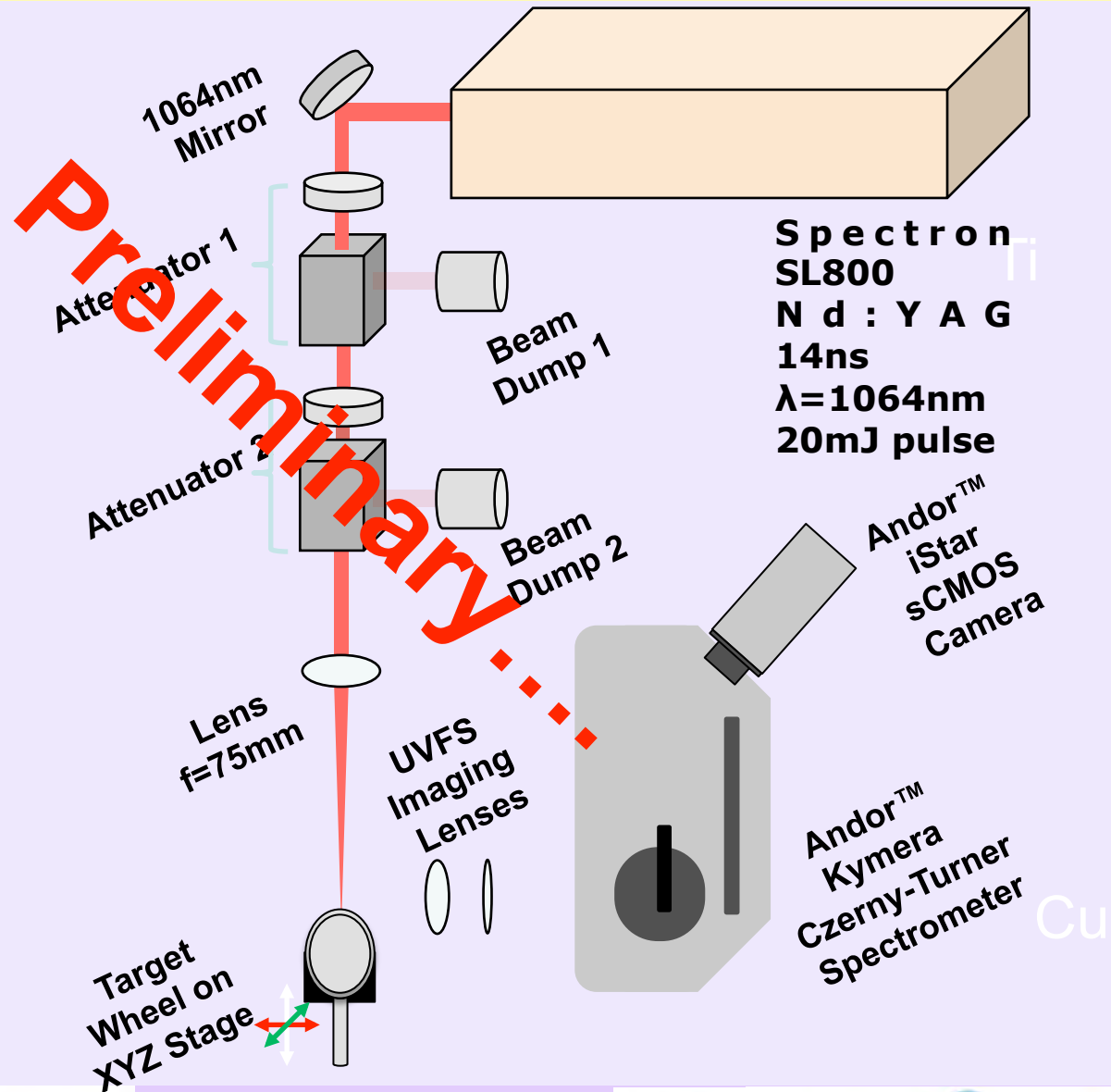
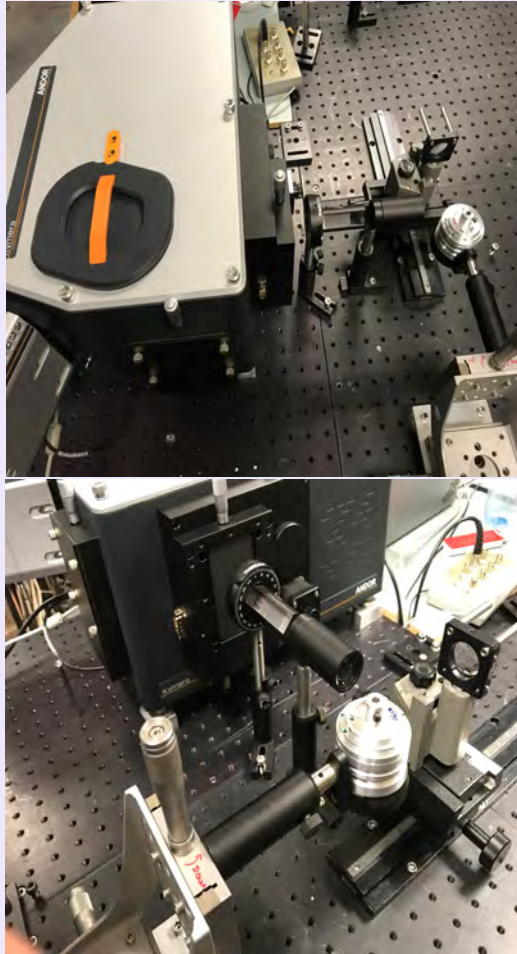


120 ns      180 ns      240 ns

**Acquisition Delay Time**

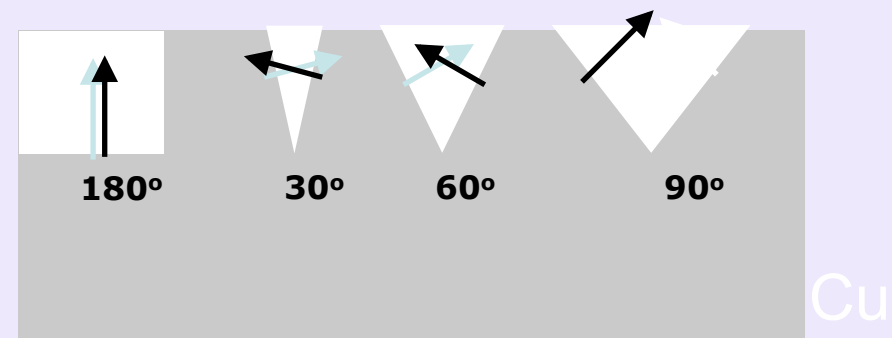
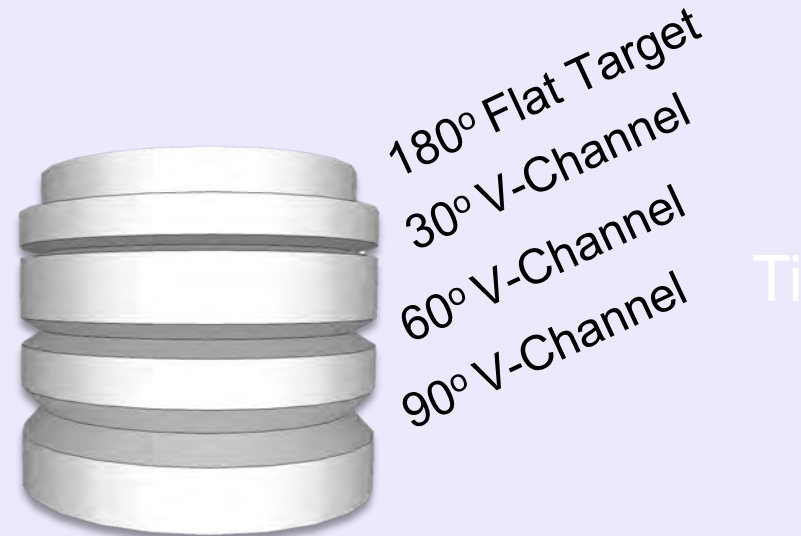
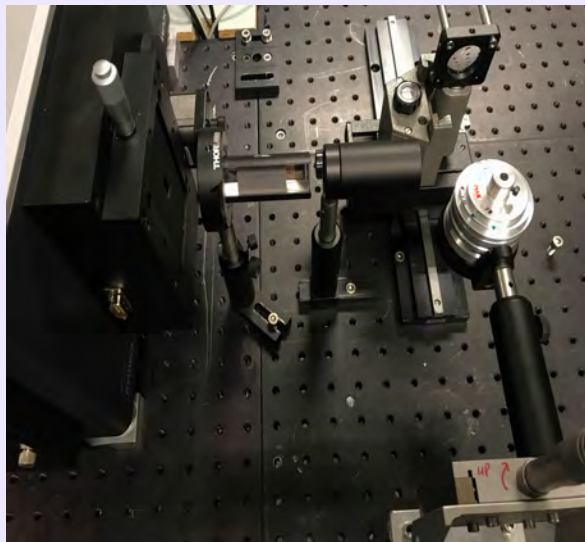
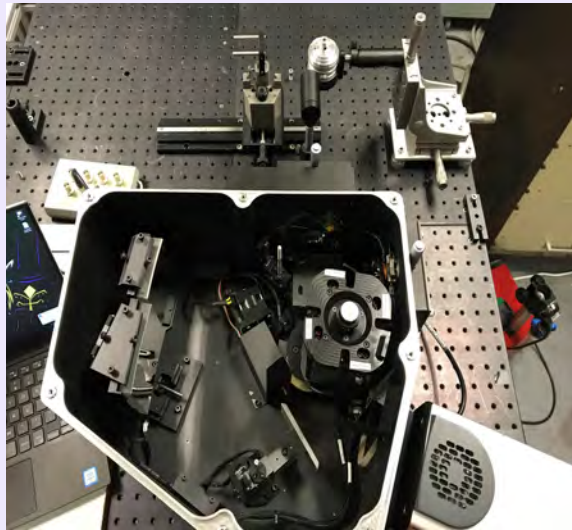
# Part IV. Key Properties–Potential Applications

## Stagnation in air ?



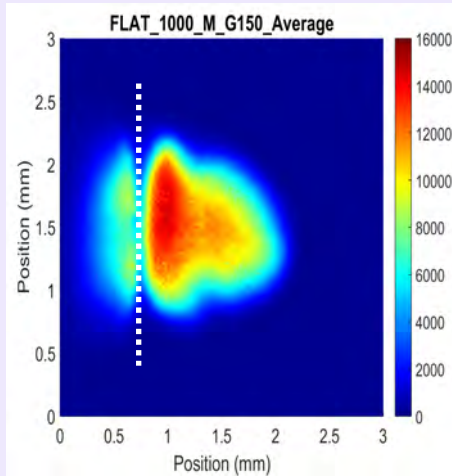


# Part IV. Key Properties–Potential Applications

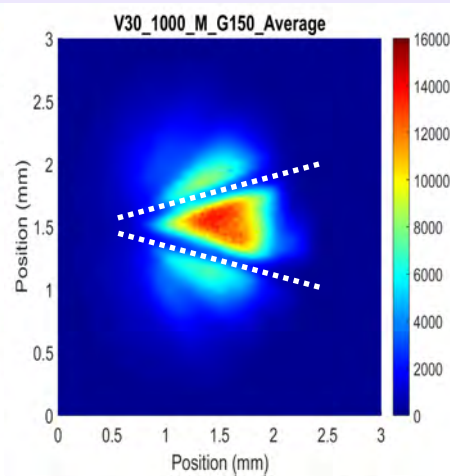


# Part IV. Key Properties–Potential Applications

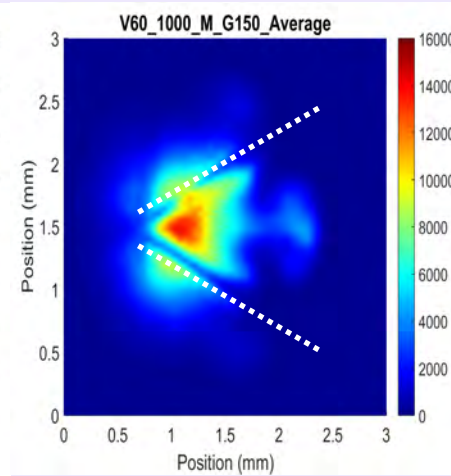
**Flat Target**



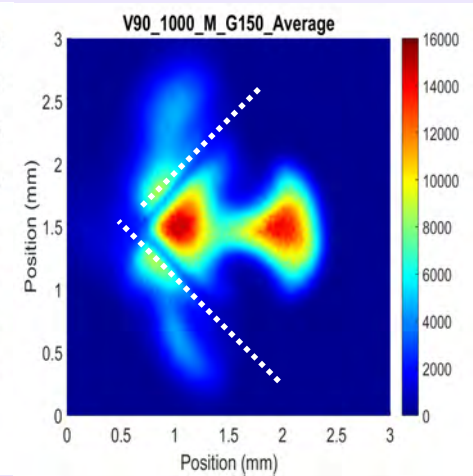
**30° Target**



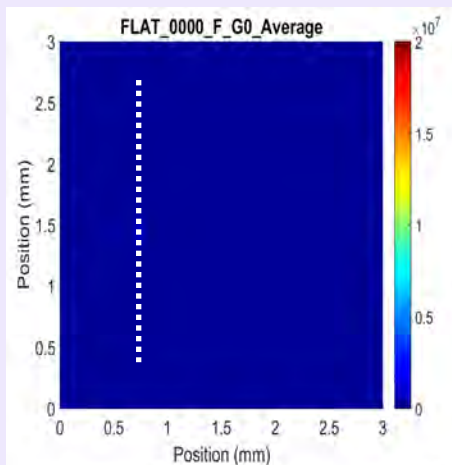
**60° Target**



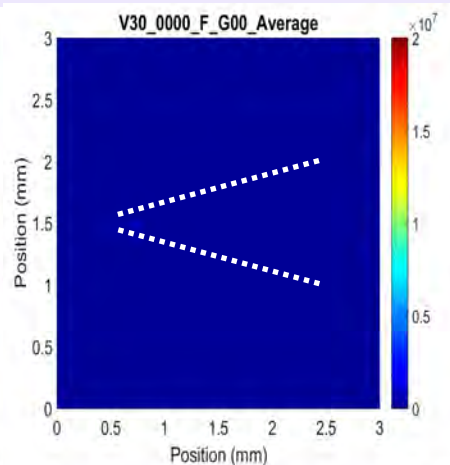
**90° Target**



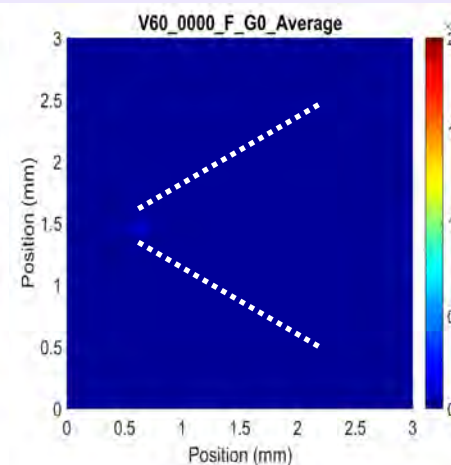
**Flat Target**



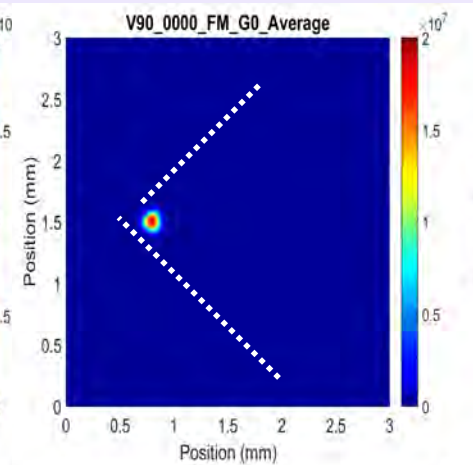
**30° Target**



**60° Target**

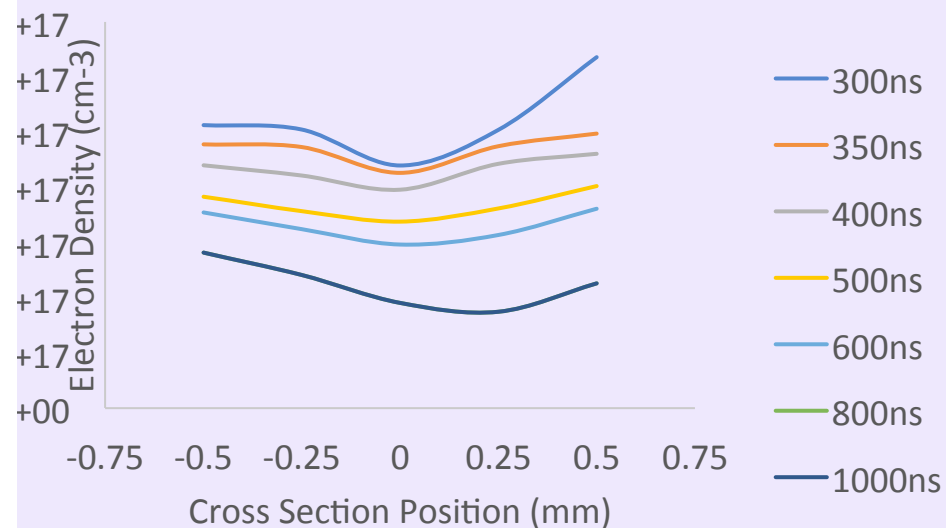


**90° Target**

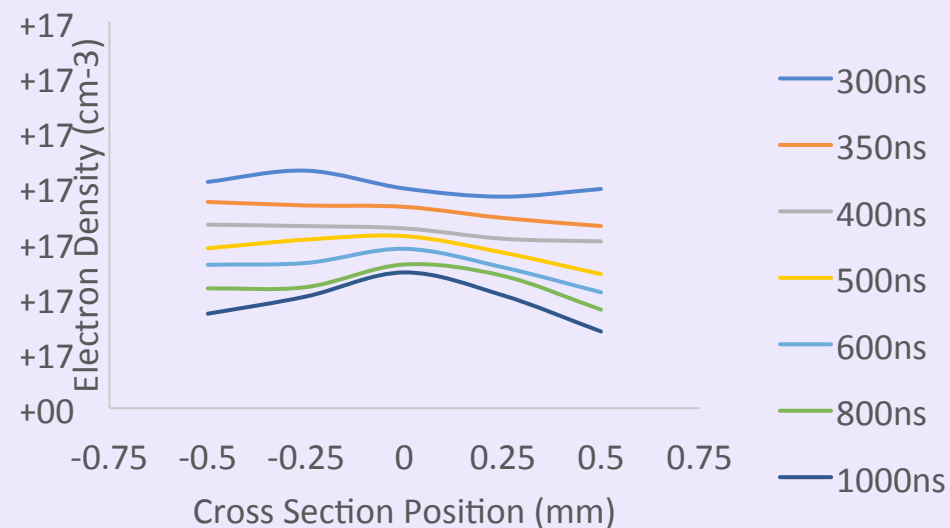




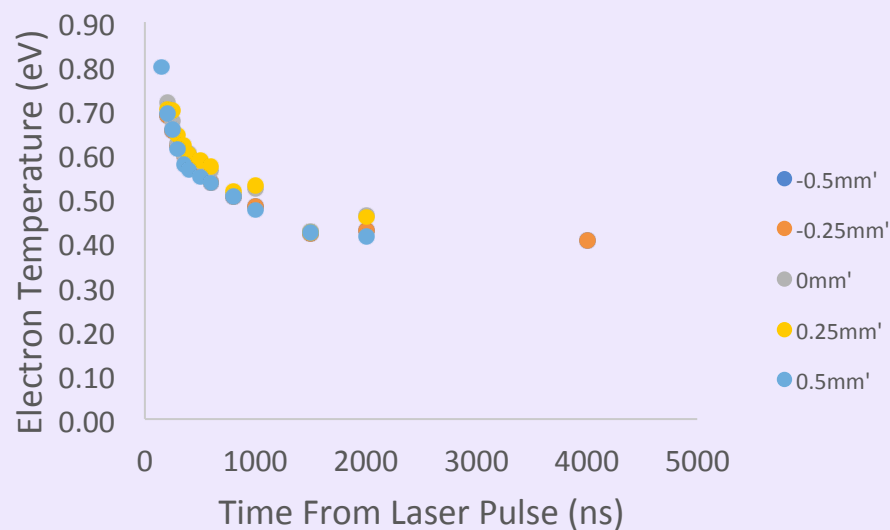
### Plasma Densities for 90° Target Cross Section



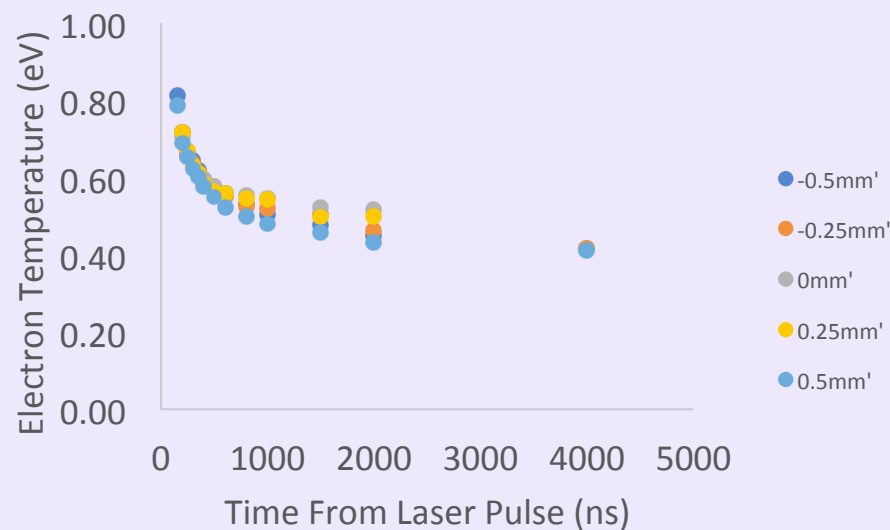
### Plasma Densities for Flat Target Cross Section



### Time-Resolved Electron Temperature - 90° Target



### Time-Resolved Electron Temperature - Flat Target



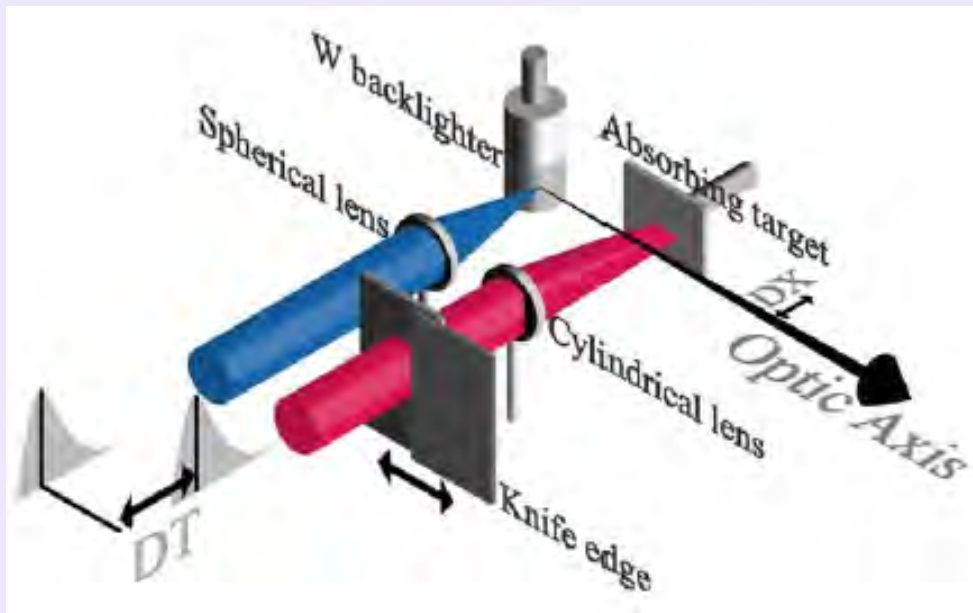
## Part IV. Key Properties–Target for XFELs

The most important property is **flexibility**. Since a stagnation layer is a partially ionized plasma, it has **many free parameters, which can be tuned for specific applications.....**

Ti

Cu

# Part IV. Key Properties–Target for XFELs



No tuning required  
No vapour required

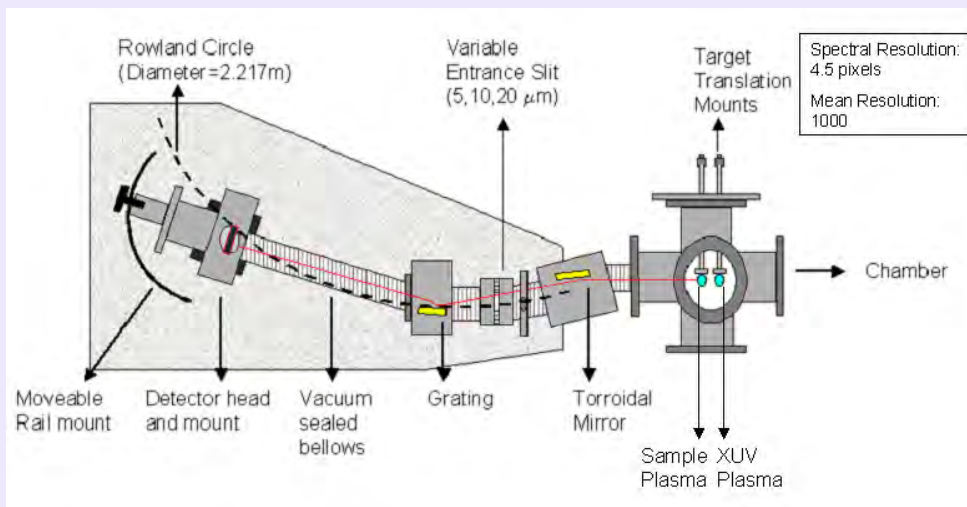
Neutrals (atoms & mols)/  
Multiply charged ions/  
Refractory Elements

$\Delta x, \Delta T, I(\text{W}/\text{cm}^2)$   
→ Species choice

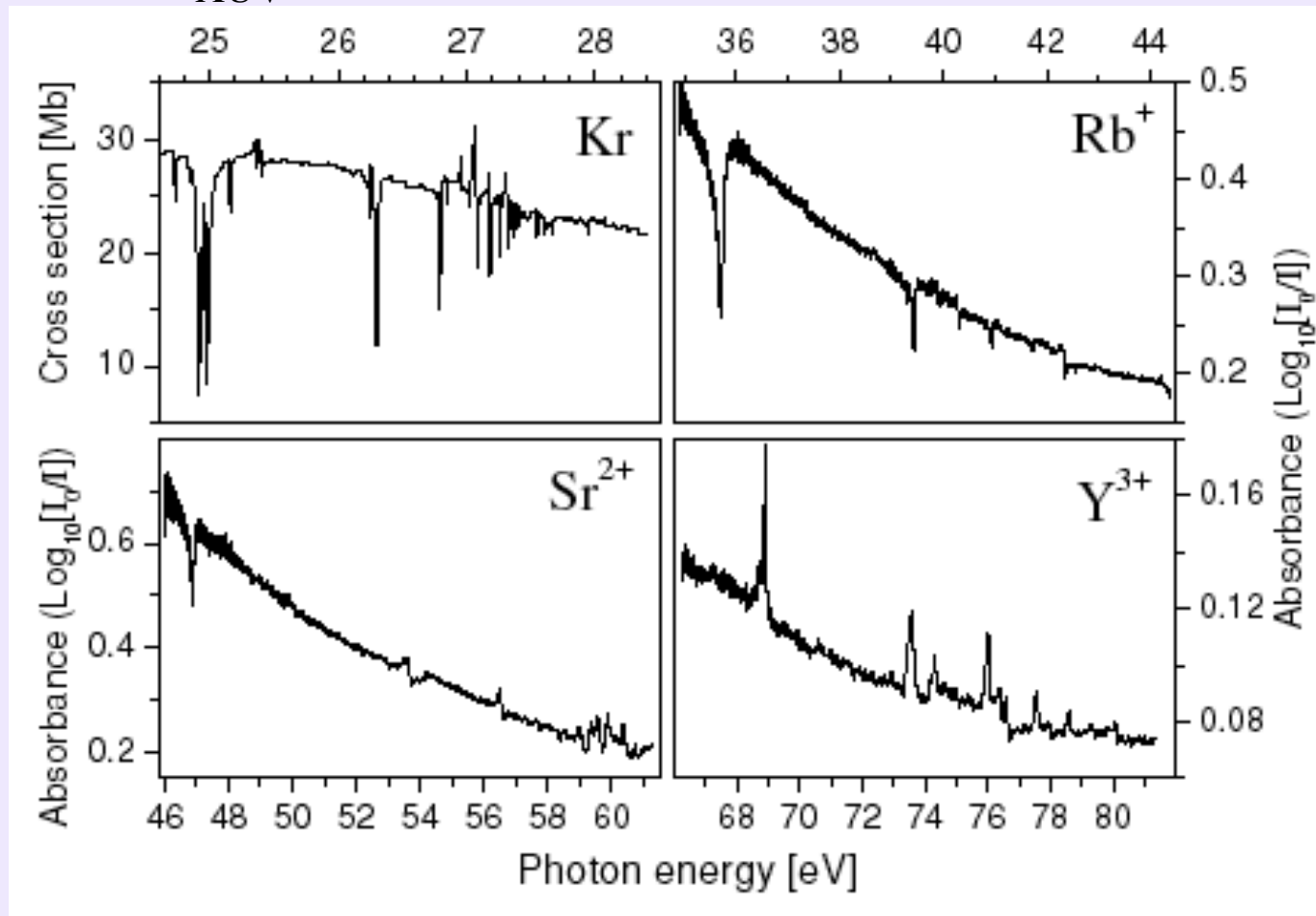
Backlighting Plasma  $I_0$   
Both Plasmas  $I = I_0 e^{-\sigma n L}$

Relative Absorption  
Cross Section  $\sigma n L = \ln(I_0/I)$   
Cu

J T Costello et al., Phys.Scr. **T34**, 77 (1991),  
E T Kennedy et al., Opt.Eng **33**, 3984 (1994)



# Part IV. Key Properties–Target for XFELs



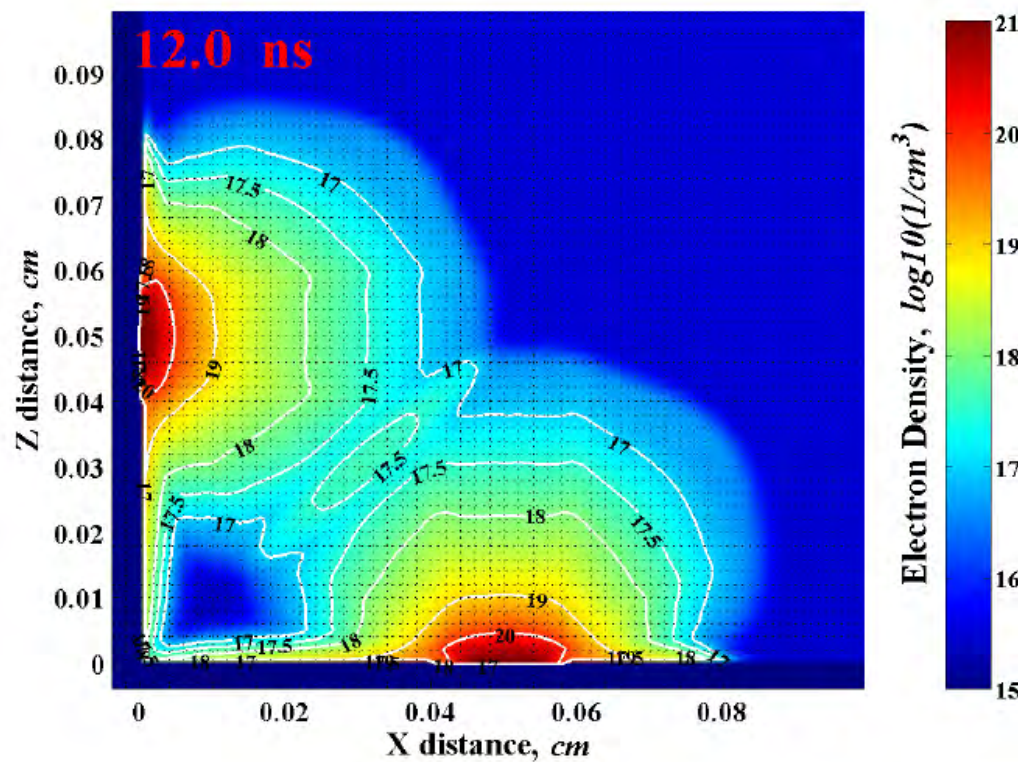
Ti

Cu

A Neogi et al., Phys.Rev.A **67**, Art. No. 042707 (2003), P Yeates et al., J. Phys. B: At. Mol. Opt. Phys. **37**, 4663 (2004), Ph V Demekhin et al., Optics and Spectroscopy 102, 149–158 (2007)

# Part V. Next Steps

## *Laser-Created Colliding Plasmas*



Density Simulation  
with 'HEIGHTS' code  
from Ahmed  
Hassanein Purdue  
University

PURDUE  
UNIVERSITY



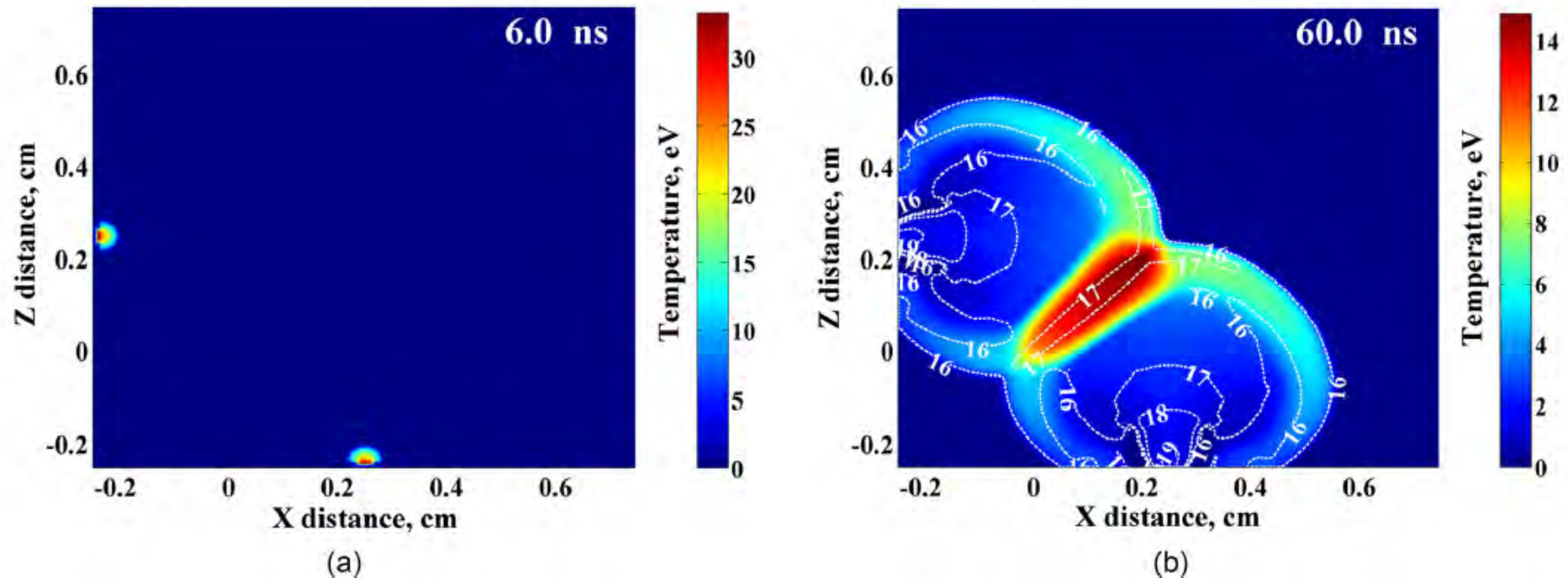
Physics Colloquium,  
Kassel Uni. 14-12-2017





## Part V. Next Steps

Colliding plasmas from C.  $10^{10}$  W/cm<sup>2</sup>. 150 mJ, 6 ns pulses, 0.5 mm spot size



Sisyuk et al., J. Appl. Phys. 122, 023303 (2017)

Simulation with 'HEIGHTS' code - Ahmed Hassanein, Purdue Univ.

Also from Purdue. C<sub>2</sub> dimer emission @ GW.cm<sup>-2</sup> intensities.

Al-Shboul et al. Plasmas 21, 013502 (2014)

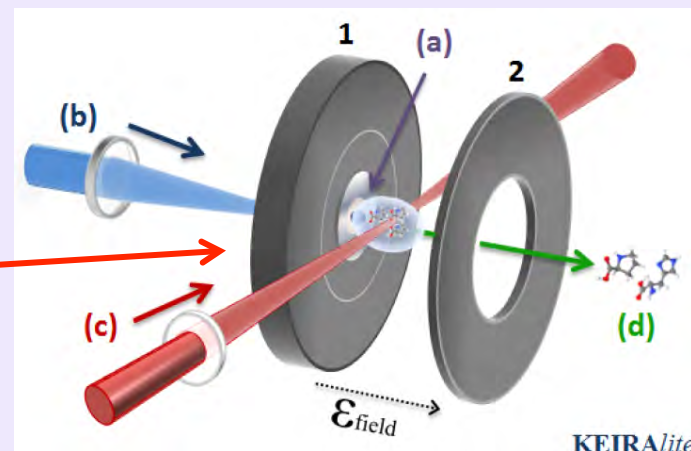
# Part V. Next Steps

1. **Analytical Sciences:** Applications of Stagnation Layers in LIBS and LA-ICP-MS for LOD enhancements (NPs)

2a. **Bio-molecular Sciences:**

Stagnation Layers as 'getters' for biomolecule aggregation in LIAD

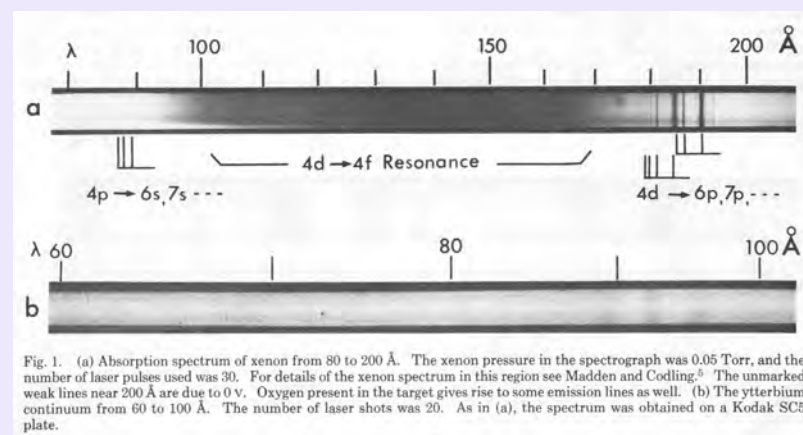
C R Calvert, L Belshaw, M J Duffy, O Kelly, R B King, A G Smyth, T J Kelly, J T Costello, D J Timson, W A Bryan, T Kierspel, P Rice, I C E Turcu, C M Cacho, E Springate, I D Williams and J B Greenwood, Phys. Chem. Chem. Phys. **14**, 6289–6297 (2012)



2b. **Femtosecond** colliding plasmas – nanoparticle stagnation for biomolecular capture.....

3. **XUV/X-ray sources:**

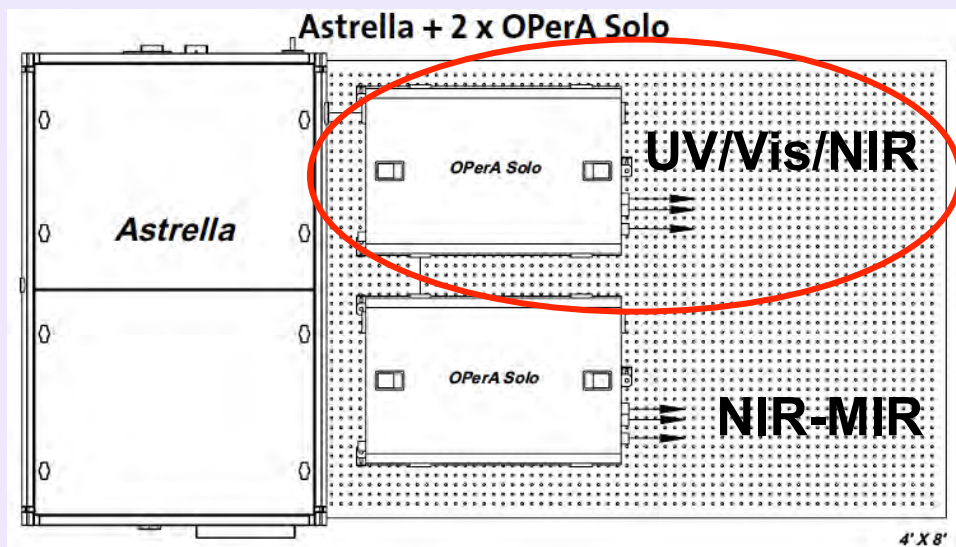
Applications of Stagnation Layers in double pulse experiments (especially opacity reduction in high-Z materials to enhance spectral line emission)



P K Carroll et al., Opt. Letts. **2**, 72 (1978)

# Part V. Next Steps

## UF Laser Spectroscopy@DCU - 2018

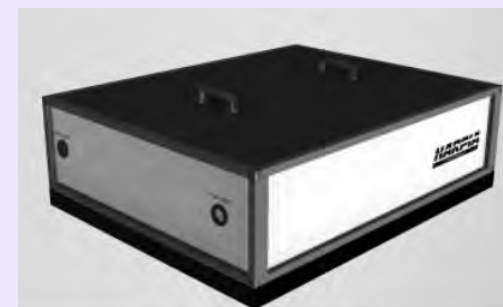


**Pump-Probe Transient  
Absorption Spectrometer**

**Optical Delay Line**



**Phase-Tech 2D IR  
Correlation Spectrometry**



P K Carroll et al., Opt. Letts. 2, 72 (1978)



ST  
EP

Science &  
Technology  
Enhancement  
Platform

# 24<sup>th</sup> ICSLS in Dublin - Provisional Dates: 17 – 22 June 2018



Local Organiser: John Costello –  
[www.physics.dcu.ie/~jtc](http://www.physics.dcu.ie/~jtc)



# Financial Support to DCU Group

Higher Education Authority – Programme for Research in Third Level Institutes (IV and V)



Science Foundation Ireland – Investigator Prog. 12/IA/1742 & SIRG 13/SIRG/2100 (PH)



Irish Research Council (PhD Scholarships / Postdoctoral Fellowships)



EU FP7 Erasmus Mundus Joint Doctorate 'EXTATIC' – EUV and X-ray Technology and Training for Interdisciplinary Cooperation – Grant No. FPA 0033-2012



Physics Colloquium,  
Kassel Uni. 14-12-2017

