

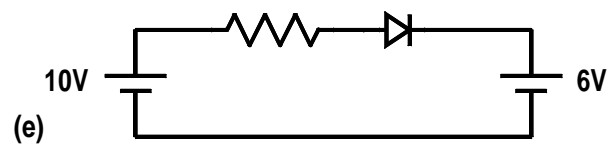
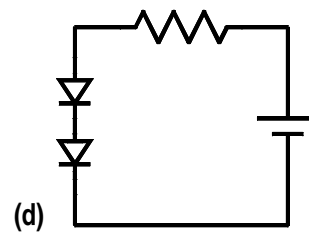
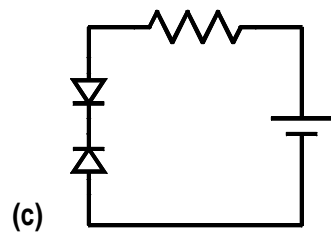
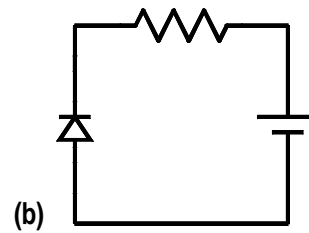
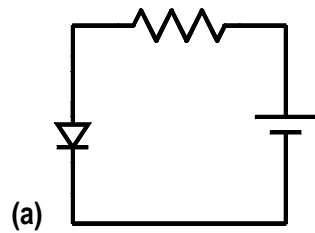
In a diode, current flows easily

1. From the anode to the cathode
2. From the cathode to the anode

In a reverse biased diode,  
increased reverse bias voltage

1. Gives a thicker depletion layer and a larger junction capacitance
2. Gives a thicker depletion layer and a smaller junction capacitance
3. Gives a thinner depletion layer and a larger junction capacitance
4. Gives a thinner depletion layer and a smaller junction capacitance

Indicate which circuits will permit the flow of current.



When the temperature of a reverse biased diode is increased

1. The current increases
2. The current decreases