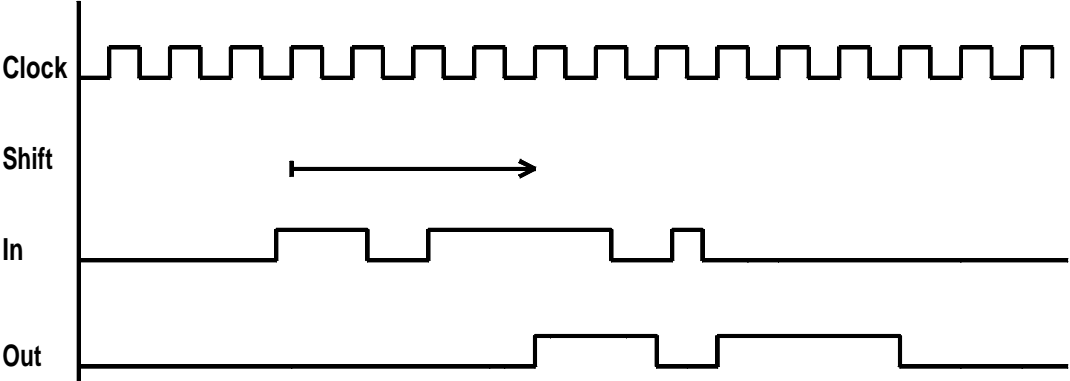
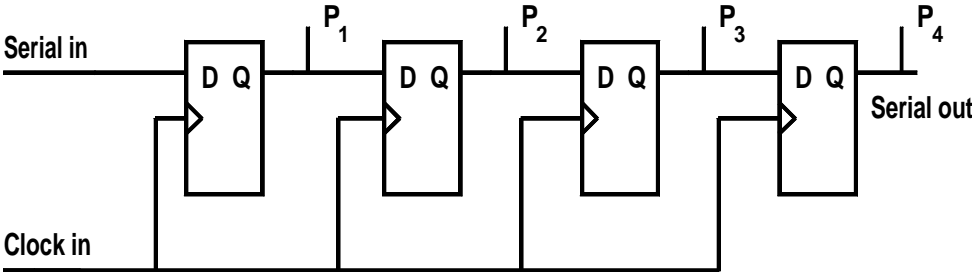
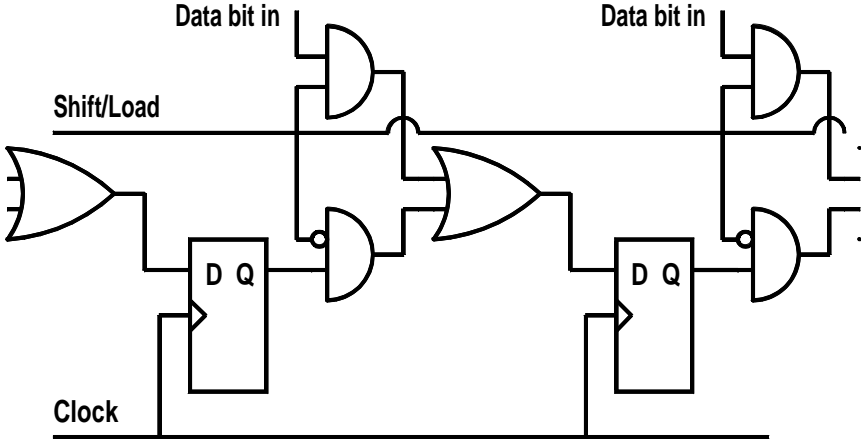


- A shift register is a line of single bit memory cells which are connected so that the output of one provides the input to the next in line.
 - An alternative name is a bucket brigade.
 - A shift register moves the contents of each memory cell one bit to the left or right at each clock pulse.
 - A shift register can operate with either a serial or parallel input and either a serial or parallel output.
-



SISO shift register and input and output waveforms.

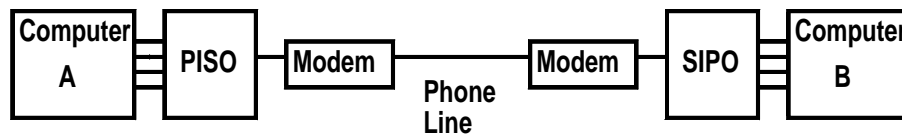


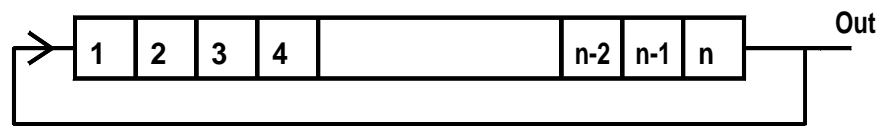
Single stage of a PISO shift register.

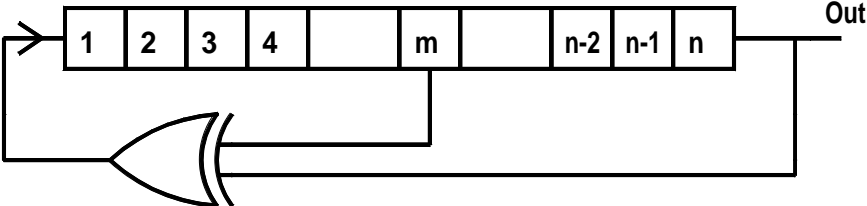
Inputs								Q_A
Mode Control	Clocks		Serial	Parallel				
	2(L)	1(R)		A	B	C	D	
H	H	X	X	X	X	X	X	Q_{AC}
H	↓	X	X	a	b	c	d	a
H	↓	X	X	Q_B	Q_C	Q_D	a	Q_{Bn}
L	L	H	X	X	X	X	X	Q_{AC}
L	X	↓	H	X	X	X	X	H
L	X	↓	L	X	X	X	X	H
↑	L	L	X	X	X	X	X	Q_{AC}
↓	L	L	X	X	X	X	X	Q_{AC}
↓	L	H	X	X	X	X	X	Q_{AC}
↑	H	L	X	X	X	X	X	Q_{AC}
↑	H	H	X	X	X	X	X	Q_{AC}

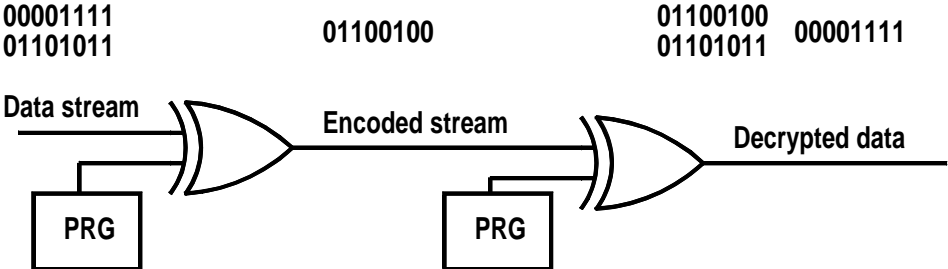
Function table for the 7495 4 bit shift register

Unit 25 Shift Registers and pseudo random generators









Encryption of data transmitted over a radio link.
